

Minnesota



Scouting Report



vs Seattle 9/7/08
Video/Game



<u>MINNESOTA OFFENSE</u>	<u>MINNESOTA DEFENSE</u>
<ol style="list-style-type: none"> 1. Play up tempo looking to push ball up either sideline on every possession. Will try to pass ahead whenever possible. 2. Cannot pass ahead will flow directly into early offense. Have simplified their early offense. Still form sideline triangle and try to isolate post on low block. However, on ball reversal will run a baseline screen (flex cut). Augustus most effective. 3. Early offense also will flow into side screen action. 4. Set offense primarily built around Augustus. However, will also isolate Anosike with strong low post ups and at the elbow. 5. On ball screens are screen and pops rather than rolls to the basket. Anosike extremely good at hitting the 10"-12' jumper. Houston is also active in posting up and 1 on 1 drives from elbow. 6. Will run the majority of set offense out of a double side post ("Horns") alignment. Will mainly drive off high posts or feed them for 1 on 1 Isolations. 7. DeForge only spot up shooter. (No open looks). All rest dribble penetrators especially Augustus and Wiggins. Need good backside support against their drives. 8. Wiggins, off the bench, is instant offense. She will look to score and will attack the basket on dribble drives. They run a lot of mid screen action for Wiggins. Will also rebound and take it coast to coast. Quick. 9. Went mainly to fast breaks and mid screens in second half after losing control of game and 11 point halftime lead. Susceptible to large runs during the game. Seattle had two in second half (17-5 and 15-0). Mainly as a result of poor shot selection, 1 on 1 play (Augustus) and lack of offensive rebounding and defensive balance. 10. Must be prepared to defend: <ol style="list-style-type: none"> a. Early sideline pushes. b. Strong low post up isolations in early offense. c. Side and mid On Ball screens especially the roll. d. Augustus and Wiggins penetrations along with Anosike & Houston one-on-one isolations. 	<ol style="list-style-type: none"> 1. Harding will pressure full court entire game on made shots. Inbound defender will double team primary ball handler dead ball out of bounds. Once inbounds pass is made they will match up. (Harding did a great job of denying Bird the ball first half). 2. Play strong on ball defense and pass denial on wings. However, weak against back cuts and dribble penetration. 3. Trail cutters. Very susceptible dribble hand offs and basket cuts 4. They have real problem defending on ball screens. Show & recover or go behind on ball screens. Rasmussen really show hard (can slip the screen or drive off hard to pick up a foul.) 5. Switch occasionally on off ball screens as a result of getting beat rather than attacking. 6. Fairly aggressive on low post ups. When guarding a high post Ohlde will play off using her long wing span. 7. Second efforts. Lack of height hurts them on offensive boards. Go to the offensive boards. 8. Will occasionally deploy a 2-3 zone on sideline out of bounds situations or after time outs. Ran 2-3 zone at the end of the first period and start of second period. Passive zone. 9. Will run out on all defensive rebounds and turnovers. Will make a long outlet to Harding near mid court line. (Smother rebounder and deny Harding). <p>Notes:</p> <p>Minnesota much improved over previous game scouted at Seattle! Career game for Harding & DeForge. Second half melt down (out scored 61 – 42) Mid Screens & free lance. Five point game with a minute to play.</p>



Depth Chart

PG	#10 Harding	#11 Wiggins	#45 Quinn
SG	#30 DeForge	#11 Wiggins	
SF	#33 Augustus	#52 Rasmussen	#20 Moore
PF	#3 Ohlde	#55 Hayden	
C	#21 Anosike	#20 Houston	

Most Used Line Ups

Starters: #10 Harding #30 DeForge #33 Augustus #3 Ohlde #21 Anosike

First sub: 3:56 - 1st Period Wiggins for Harding and Hayden for Ohlde.

Starters second half.

First sub: 7:08 - 3rd Period Wiggins for DeForge (3rd foul). (5:46) Houston for Ohlde.

Go to Players:

Augustus! However, will also pound cake it into Anosike. Wiggins free spirit off bench.

Player	1st Half	2 nd Half	Mins	Pts
#3 Ohlde	///	/	21:04	4
#10 Harding	//// /	////	32:38	11 (10A)
#11 Wiggins	////	//// //	24:11	16
#20 Huston	//	/	11:19	0
#21 Anosike	///	//	30:36	5 (1/6)
#30 DeForge	//// /	///	25:23	17 (7/9)
#20 Moore			00:19	0
#33 Augustus	//// //	//// ////	37:18	26
#45 Quinn	DNP	DNP	DNP ???	
#52 Rasmussen		/	3:54	0
#55 Hayden	///	/	13:19	6



Frequencies

Minnesota vs Seattle 9/7/08

First Half		Second Half		
Call/Set	Frequency	Call/Set	Frequency	
Transition/Fast Break	//// //	Transition/Fast Break	//// /	
Early Post Iso	///	Early Post Iso	///	
Early Reversal (Flex)	///	Early Reversal (Flex)	///	
Early Reversal Trail (Drive)	/	Early Reversal Trail (Drive)	/	
Early Side Screen	//// /	Early Side Screen	///	
Mid Screen	/	Mid Screen	//// ///	
Dribble Handoff (Weave)		Dribble Handoff (Weave)	//	
Horns (4 Down)	///	Horns (4 Down)	///	
Horns HP Feed		Horns HP Feed	/	
Zipper Curl "L"	/	Zipper Curl "L"		
Kentucky Cross	/	Kentucky		
Base Cross	//	Base Cross		
1-4 Iso		1-4 Iso	///	
Freelance	/	Freelance	//// //	
BOB	/	BOB	////	
SOB	//	SOB	//// //	

Notes: Against Los Angeles isolated Anosike (and Houston) a more on Low and High Post feeds.



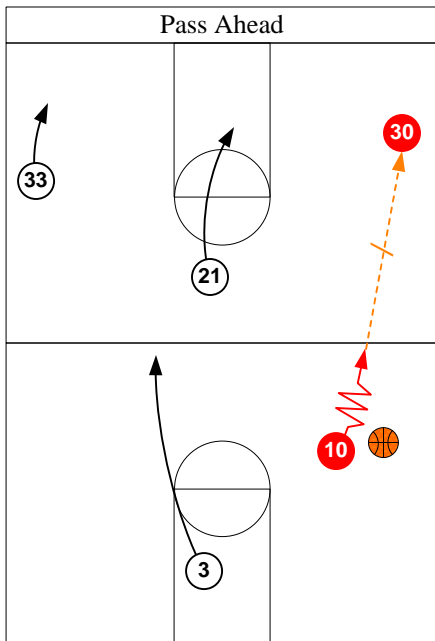
Opponent: Seattle 9/7/08

Los Angeles 9/1/08 (Video)

Phoenix 9/3 (Video)

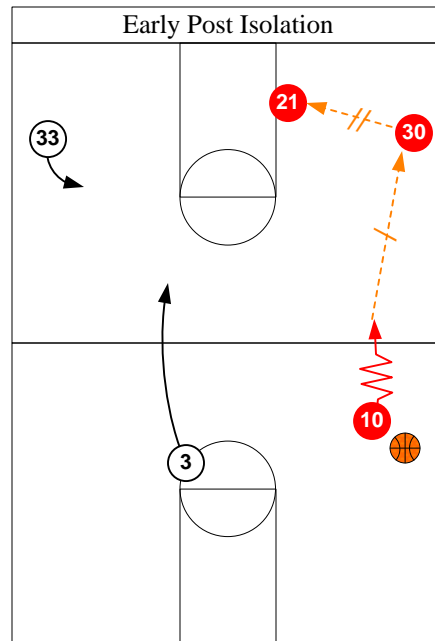
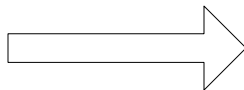
Early Offense

Lynx will play up tempo and pushing the ball up sideline off every defensive rebound and turnover. On missed shots they will advance the ball up a sideline either on the dribble or pass ahead. On made shots, their post Ohlde (or Rasmussen) will inbound the ball to Harding. Shooters Augustus and DeForge will run out to corners and Anosike will post up low.



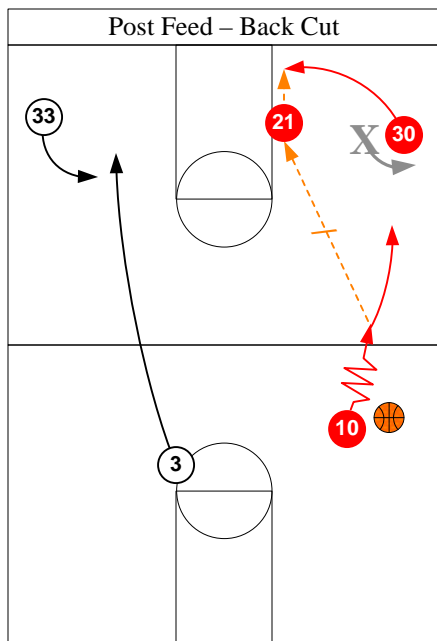
Kick Ahead Option

Harding will pass ahead to DeForge who will not hesitate to shoot the ball.
 Augustus has a tendency to put ball on floor on the pass ahead.
 Run to both sides, but Harding has a tendency to favor right side.



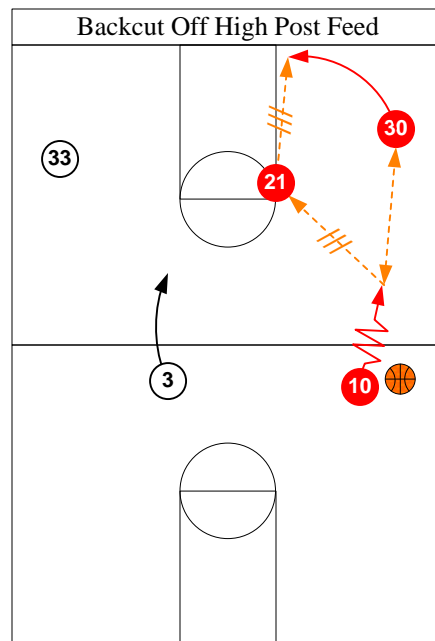
“Pound Cake”

Harding will pass ahead to wing who in turns looks to feed Anosike or Ohlde posting up strong.
 Big part of their offensive attack. Will run to both sides of the court.
 Note: against Seattle reversed the ball to weakside rather than pounding inside. Against LA and Phoenix went inside to Anosike hard.



CAUTION!

If when wing is overplayed, point will pass directly to post who feeds wing on back cut.
 Ran successfully, against LA & Seattle a couple of times.



Minnesota will all run the wing back cut from the high post. Harding will kick the ball ahead to DeForge who passes back to Harding. Harding then passes to high post who will look to feed DeForge on back cut.

Note: They primarily run the back cut to DeForge. But, occasionally, will run it to Augustus.

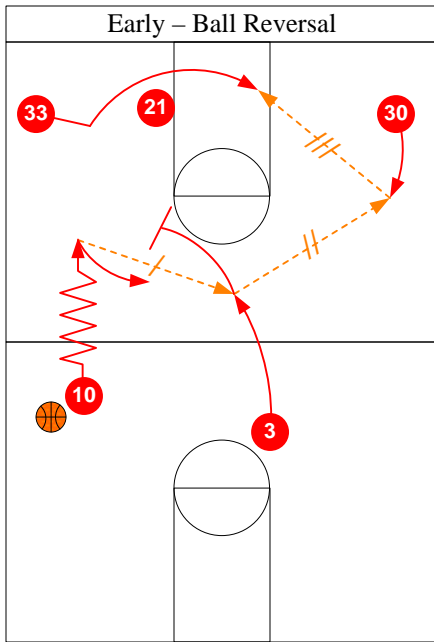


Opponent: Seattle 9/7/08

Los Angeles 9/1/08 (Video)

Phoenix 9/3 (Video)

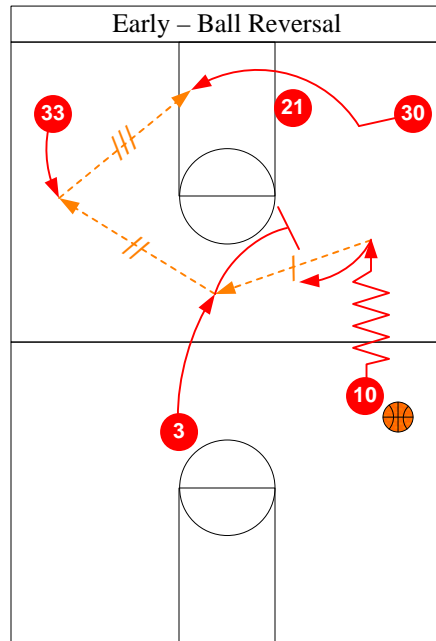
Early Offense



{NEW}

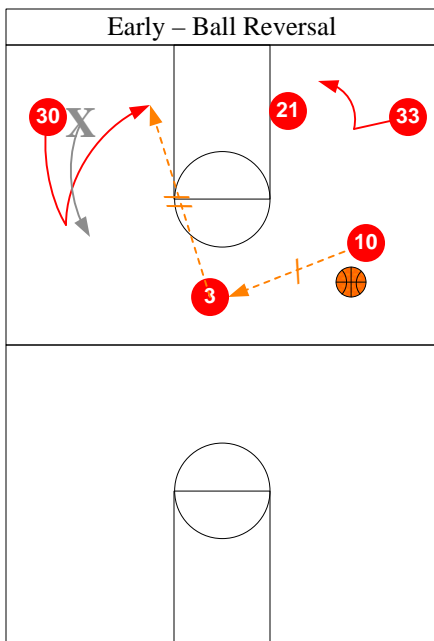
Harding advances ball up sideline and makes a reversal pass to trail Ohlde who in turns passes to DeForge. DeForge looks to feed Augustus coming off Anosike's base screen.

Ohlde screen's away for Harding.

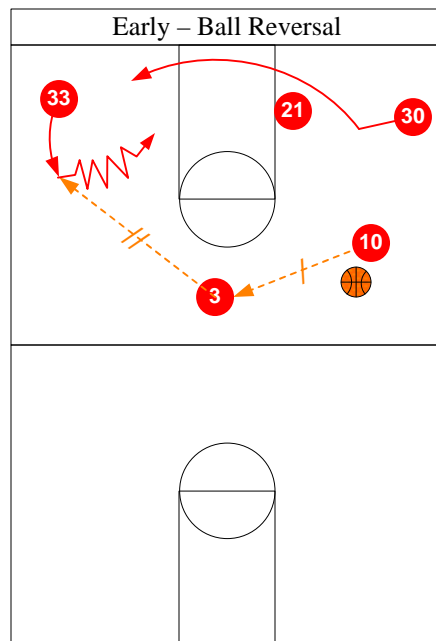


Run to both sides of the court, but prefer to go to Augustus.

Npte: August will primarily run left wing, but occasionally will take right side.



DeForge will back cut vs defensive over play



Augustus will drive on ball reversal.

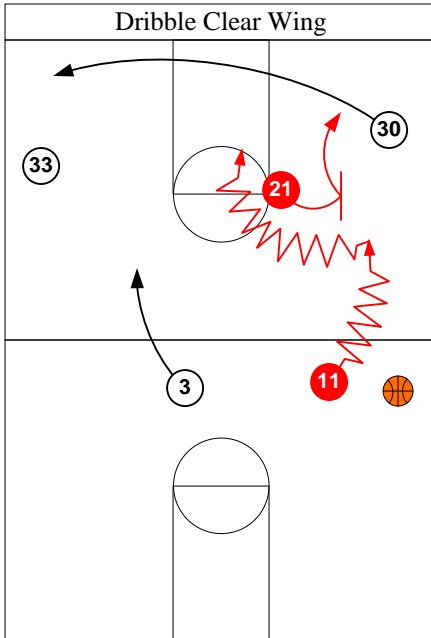


Opponent: Seattle 9/7/08

Los Angeles 9/1/08 (Video)

Phoenix 9/3 (Video)

Early Offense

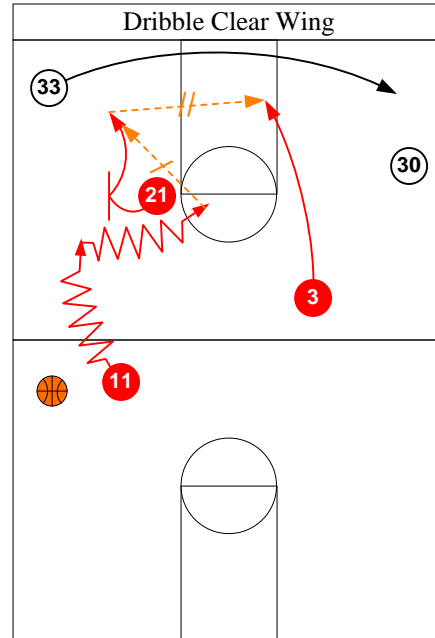


Side Screen Option

Point dribble clears wing who cuts to opposite corner. Post steps out and sets a screen for point.

Point will drive to basket or feeds screener popping out after screen.

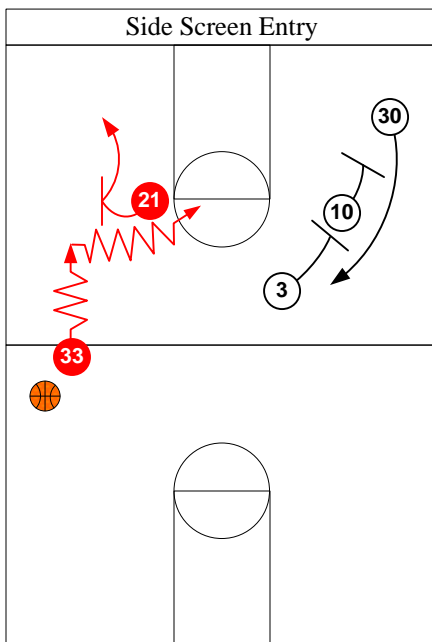
Note: Wiggins will drive hard to basket!



Side Screen Pop Action

Point will pass back to Anosike popping off side side screen. Anosike will hit this shot!

Ohlde dives to basket.



Side Screen Action

Will go directly to side screen action with Augustus bringing ball up the court.

Set a tandem double screen on weakside.



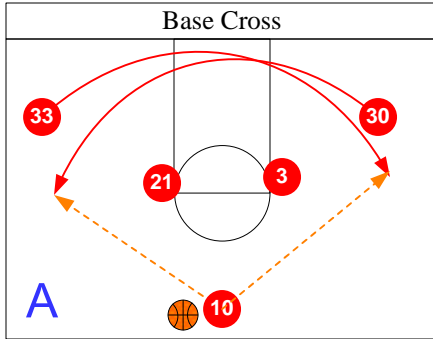
Opponent: Seattle 9/7/08

Los Angeles 9/1/08 (Video)

Phoenix 9/3 (Video)

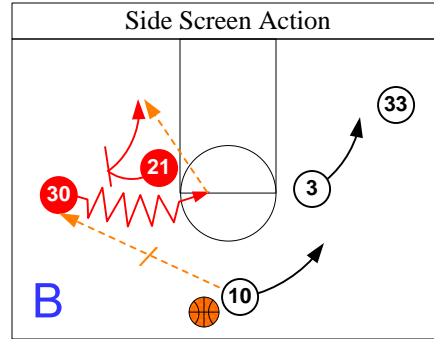
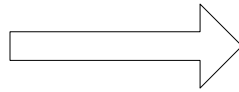
Most Used Sets

Side Screen Action



Call: Thumb ↓

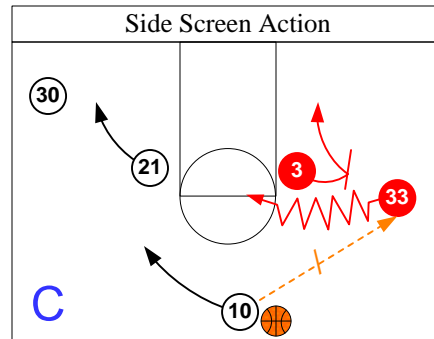
Ball is advanced into middle as wings cross on baseline. Point has option of passing to either wing.



Side Screen - Left

Post steps out and sets a side screen. Wing drives off screen for shot or pass to screener rolling to basket.

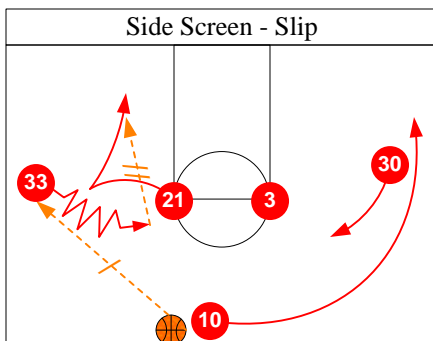
Point sets a double screen for weakside wing.



Side Screen - Right

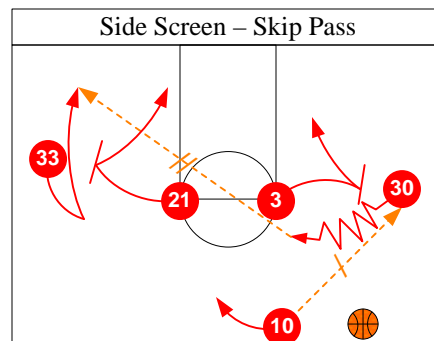
Post steps out and sets a side screen. Wing drives off screen for shot or pass to screener rolling to basket.

Point sets a double screen for weakside wing.



Side Screen

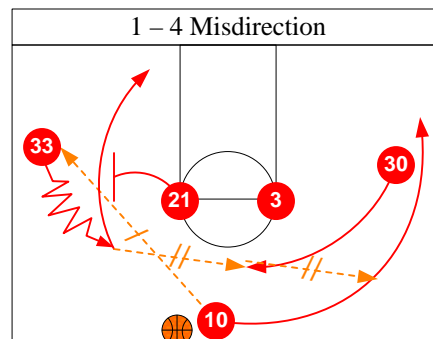
Harding makes an entry pass to Augustus and goes to opposite wing. Anosike steps out and sets a side screen. Augustus drives off screen and passes to DeForge and then circles back off Anosike's backscreen.



Side Screen

Harding makes a wing entry pass to DeForge

DeForge then drives off Ohlde's side screen. Anosike steps out and sets a weakside screen for Augustus. Augustus doubles back and receives a cross court skip pass from DeForge.



Side Screen - Lob

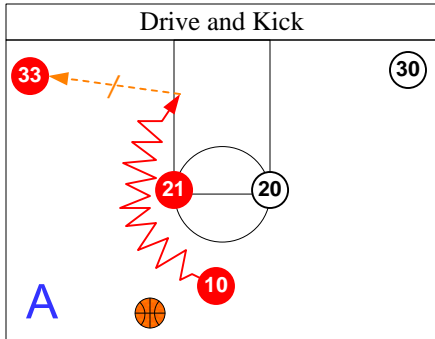
Harding makes an entry pass to Augustus and goes to opposite wing. Anosike steps out and sets a side screen. Augustus drives off screen and passes to DeForge and then circles back off Anosike's backscreen.



Opponent: Seattle 9/7/08
 Los Angeles 9/1/08 (Video)
 Phoenix 9/3 (Video)

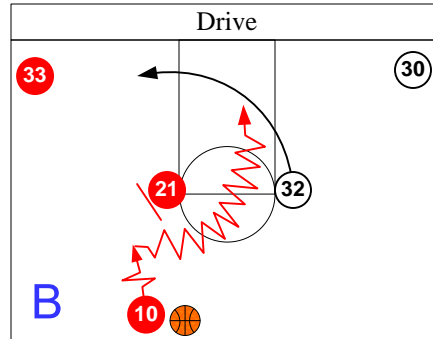
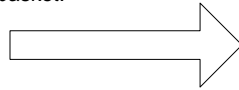
Most Used Sets

Horns Alignment – Double High Posts

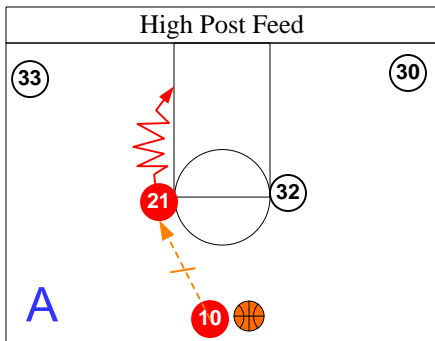


Harding will drive to basket off high post screen and look to make a kick out pass to shooter in corner.

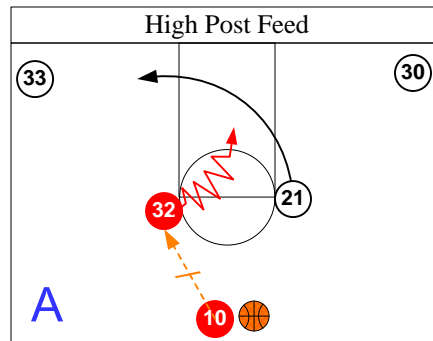
Note: Wiggins will drive hard to basket.



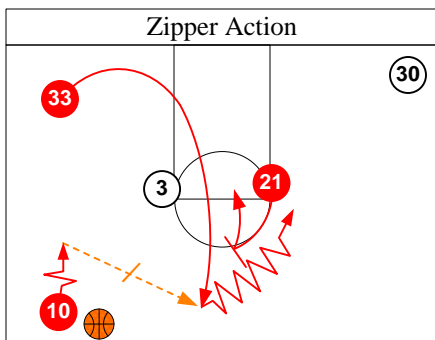
Weaksie high post will also clear out and point will drive off mid screen to middle.



Will make a direct feed to high post. Anosike will go 1 on 1.



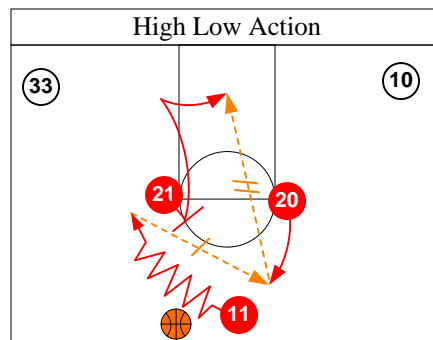
Will also clear opposite post for 1 on 1 isolation. Will also isolate Houston at high post.



Call: "L"

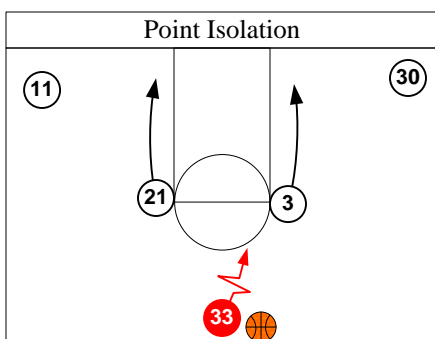
Thumb & Index finger extended

Augustus curls to top of circle off Ohlde's down screen. Anosike steps out and sets a mid screen for Augustus. Augustus will penetrate off mid screen for shot.



Call: 4 ↓

Anosike sets an On Ball screen for Wiggins and rolls to the basket. Wiggins makes a reversal pass to Houston stepping out who in turns looks to feed Anosike.



Will clear out both posts to baseline, isolating Augustus 1 on 1 at the top of circle.

Normally, will isolate Augustus 1 on 1 for last shot of period.



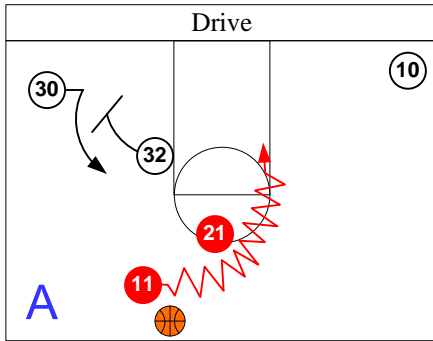
Opponent: Seattle 9/7/08

Los Angeles 9/1/08 (Video)

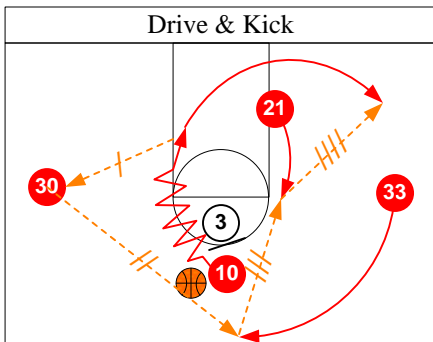
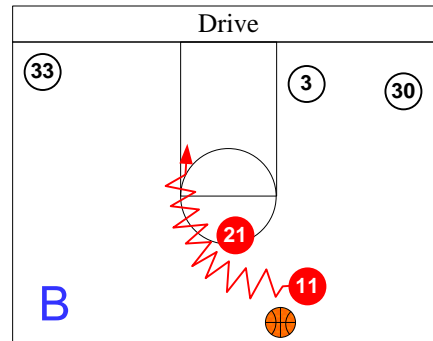
Phoenix 9/3 (Video)

Most Used Sets

Mid Screen Action



Will run mid screen for Wiggins. Wiggins drives hard to basket.



Harding drives off Ohlde's mid screen and makes a kick out pass to DeForge. DeForge makes a reversal pass out to Augustus who in turn feeds Anosike breaking up to side post. Anosike passes to Harding who continued out on baseline. Nice ball movement.

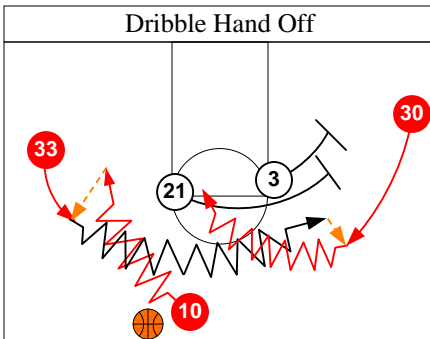


Opponent: Seattle 9/7/08

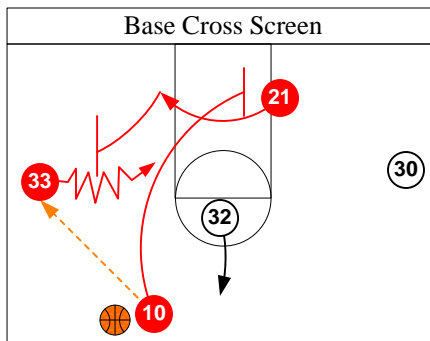
Los Angeles 9/1/08 (Video)

Phoenix 9/3 (Video)

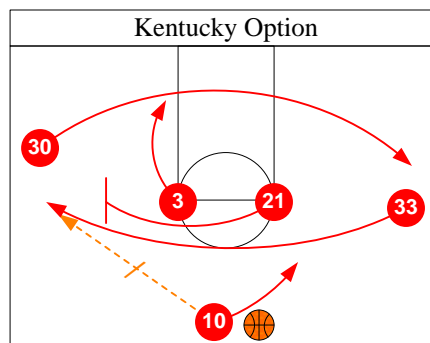
Lesser Used Sets



Minnesota will run dribble handoff action. Anosike and Ohlde set a tandem double screen.

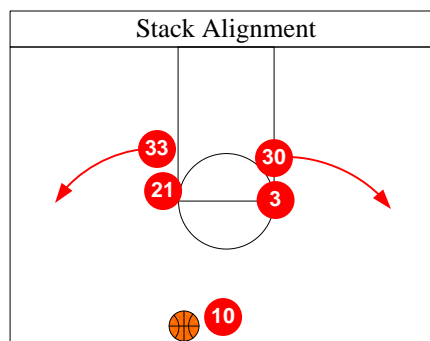


Harding pass to wing and set a base cross screen for Anosike. Anosike comes off base screen and then steps out to set a side screen for Augustus. Ran 2X.



Side Screen

Wings exchange sides. DeForge going baseline and Augustus over the top of the posts. Harding passes to wing and clears opposite. Ohlde rolls and posts up low and Anosike comes across and sets a side screen for Augustus.



Went to a stack alignment to initiate offense against LA's strong wing denials.



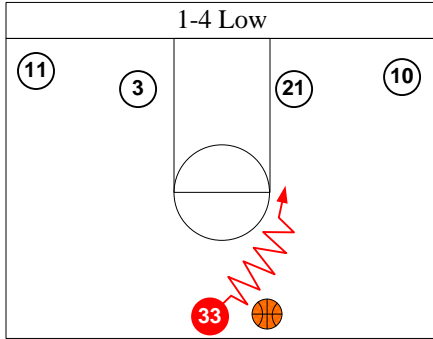
Opponent: Seattle 9/7/08

Los Angeles 9/1/08 (Video)

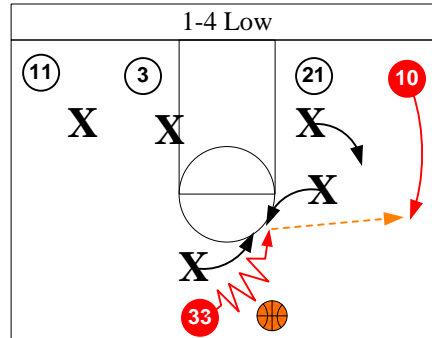
Phoenix 9/3 (Video)

Specials & Situations

Last Shot



Will isolate Augustus or Wiggins 1-on-1 for last shot of period.

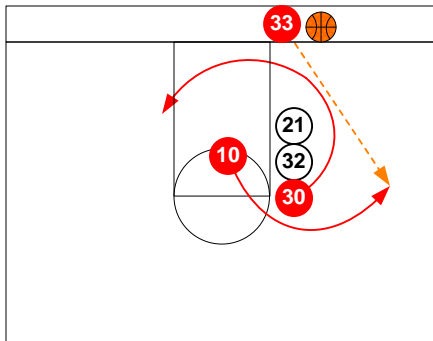


LA double team Augustus and force her to make a kick out pass to Harding who missed open three.

Note: Double teamer should have come from opposite side.

Did eliminate Augustus 1 on 1

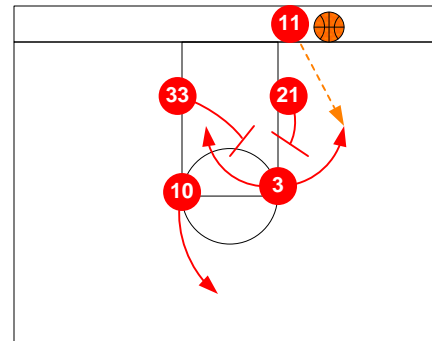
Baseline Out of Bounds



Stack

Three player stack alignment. DeForge cuts baseline around double screen. Harding breaks across out to wing off Anosike's and Rasmussen's double screen.

Augustus after inbounding the ball will break out to top of circle.

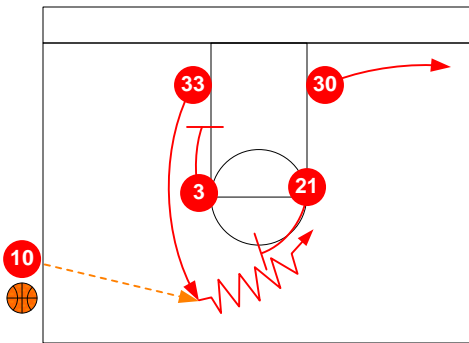


Box

Ohlde has option to break either way but went ball side every time.

I assume if she goes weakside, Augustus after setting a screen will continue toward sideline for inbounds pass.

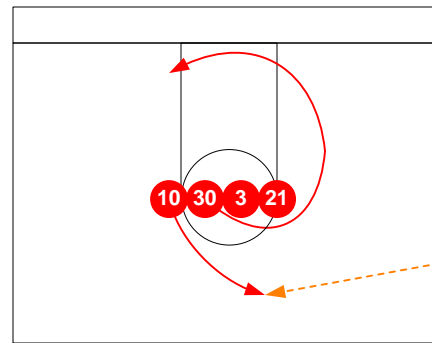
Sideline Out of Bounds



Mid Screen

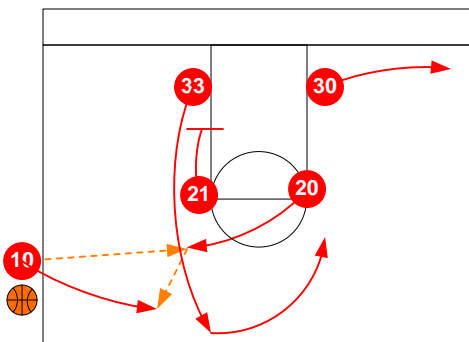
Most used. Augustus breaks out off of Ohlde's down screen and receives inbounds pass. Anosike sets a mid screen for Augustus.

Caution: They will inbound directly to low post!



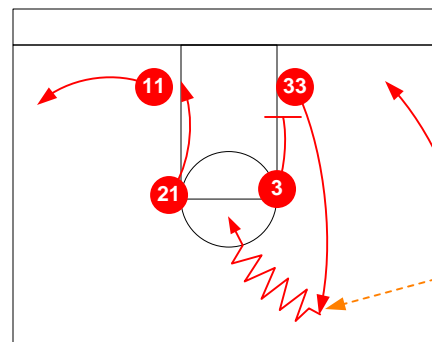
Line

Wiggins, third player in line, curls around double screen to basket and out weakside. Harding pops out and receives inbounds pass.



Houston breaks across to the ball for inbounds pass if ball cannot be inbounded directly to Anosike posting up or Augustus breaking out.

Houston will drive 1 on 1.



1 - 4 Low Isolation

Will clear to baseline for a 1 on 1 Isolation for Augustus.

OFFICIAL BASKETBALL BOX SCORE
Minnesota Lynx vs Seattle Storm

07/05/2008 7:00pm
Final Box Score

Seattle

No.	Minnesota Lynx	Total FG		3-point		Free throw		Rebounds			F	TP	A	TO	BLK	STL	MIN
		FG	FGA	FG	FGA	FT	FTA	Off	Def	Tot							
33	Seimone Augustus	6	9	1	1	1	1	0	4	4	1	14	1	0	0	0	26:52
3	Nicole Ohlde	2	4	0	0	2	2	0	3	3	2	6	2	2	1	0	22:07
21	Nicky Anosike	4	9	0	0	7	9	3	1	4	4	15	0	0	2	0	21:42
30	Anna DeForge	0	3	0	0	0	0	0	0	0	0	0	0	1	0	0	11:53
45	Noelle Quinn	2	3	1	1	2	2	0	2	2	0	7	2	2	0	1	22:05
11	Candice Wiggins	4	8	0	2	6	7	0	2	2	4	14	1	2	0	2	27:34
10	Lindsey Harding	0	6	0	0	3	6	1	0	1	2	3	3	1	0	3	17:56
20	Charde Houston	1	3	0	0	0	0	1	0	1	3	2	0	1	0	0	15:44
32	LaToya Thomas	2	4	0	0	1	2	1	2	3	1	5	0	1	0	0	13:40
52	Kristen Rasmussen	2	3	1	1	0	0	0	1	1	1	5	0	1	0	1	12:22
55	Vanessa Hayden	0	2	0	0	0	2	0	1	1	4	0	0	1	0	1	8:05
34	Navonda Moore	0	0	0	0	0	0	0	0	0	0	0	0	0	0	0	DNP
Team (Included in Totals)								1	1	2							
Totals		23	54	3	5	22	31	7	17	24	22	71	9	13	3	8	200
Total FG%: 1st half 15 - 30 (50.0%) 2nd half 8 - 24 (33.3%) Game 23 - 54 (42.6%) Deadball												rebounds					
3Pt FG%: 1st half 2 - 4 (50.0%) 2nd half 1 - 1 (100%) Game 3 - 5 (60.0%)																	
FT%: 1st half 10 - 11 (90.9%) 2nd half 12 - 20 (60.0%) Game 22 - 31 (71.0%)												3					

No.	Seattle Storm	Total FG		3-point		Free throw		Rebounds			F	TP	A	TO	BLK	STL	MIN
		FG	FGA	FG	FGA	FT	FTA	Off	Def	Tot							
2	Swin Cash	2	6	0	0	4	4	1	3	4	3	8	1	0	0	0	21:30
15	Lauren Jackson	14	21	2	7	2	2	1	5	6	3	32	0	2	0	0	25:47
13	Yolanda Griffith	0	0	0	0	0	0	0	3	3	3	0	0	0	0	1	13:06
22	Sheryl Swoopes	1	2	0	1	0	0	0	5	5	1	2	2	1	0	0	23:18
10	Sue Bird	6	11	2	5	0	0	0	0	0	0	14	8	3	0	0	27:00
30	Tanisha Wright	5	6	0	0	1	2	2	2	4	5	11	3	3	0	1	23:23
4	Katie Geraldts	6	11	4	6	1	2	1	1	2	2	17	2	1	1	1	20:02
20	Camille Little	2	4	0	0	2	2	1	3	4	0	6	3	0	1	0	18:10
0	Shyra Ely	0	3	0	0	0	0	0	4	4	4	0	1	3	0	1	12:03
9	Kelly Santos	2	2	0	0	2	3	0	0	0	2	6	1	1	0	0	8:07
32	Kristen O'Neil	0	0	0	0	0	0	0	1	1	1	0	0	0	0	0	7:34
43	Ashley Robinson	0	0	0	0	0	0	0	0	0	0	0	0	0	0	0	DNP
Team (Included in Totals)								7	2	9							
Totals		38	66	8	19	12	15	13	29	42	24	96	21	15	2	4	200
Total FG%: 1st half 19 - 37 (51.4%) 2nd half 19 - 29 (65.5%) Game 38 - 66 (57.6%) Deadball												rebounds					
3Pt FG%: 1st half 6 - 14 (42.9%) 2nd half 2 - 5 (40.0%) Game 8 - 19 (42.1%)												1					
FT%: 1st half 3 - 4 (75.0%) 2nd half 9 - 11 (81.8%) Game 12 - 15 (80.0%)																	

Technical Fouls: H#15
Attendance: Unknown
Officials: Unknown

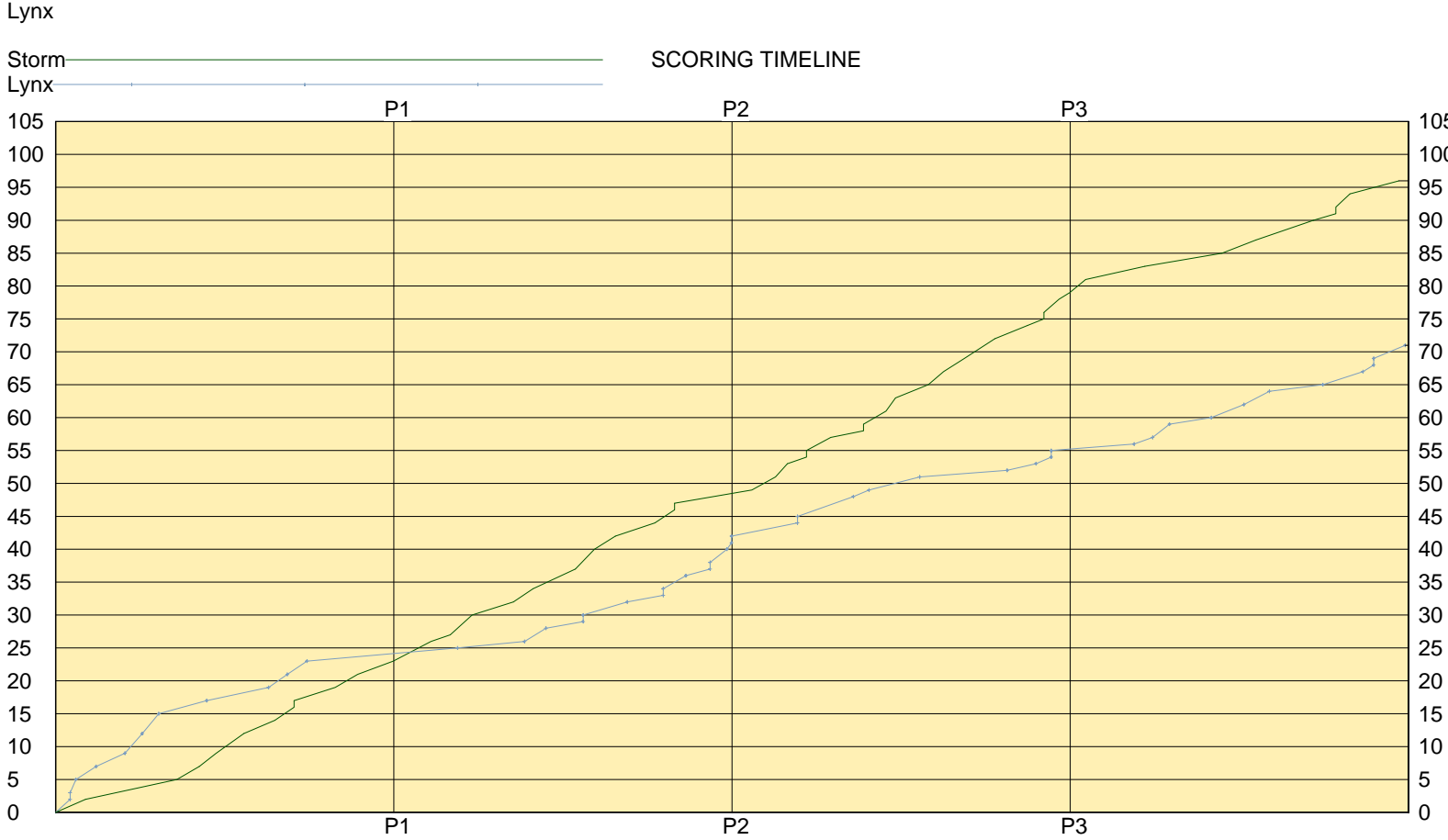
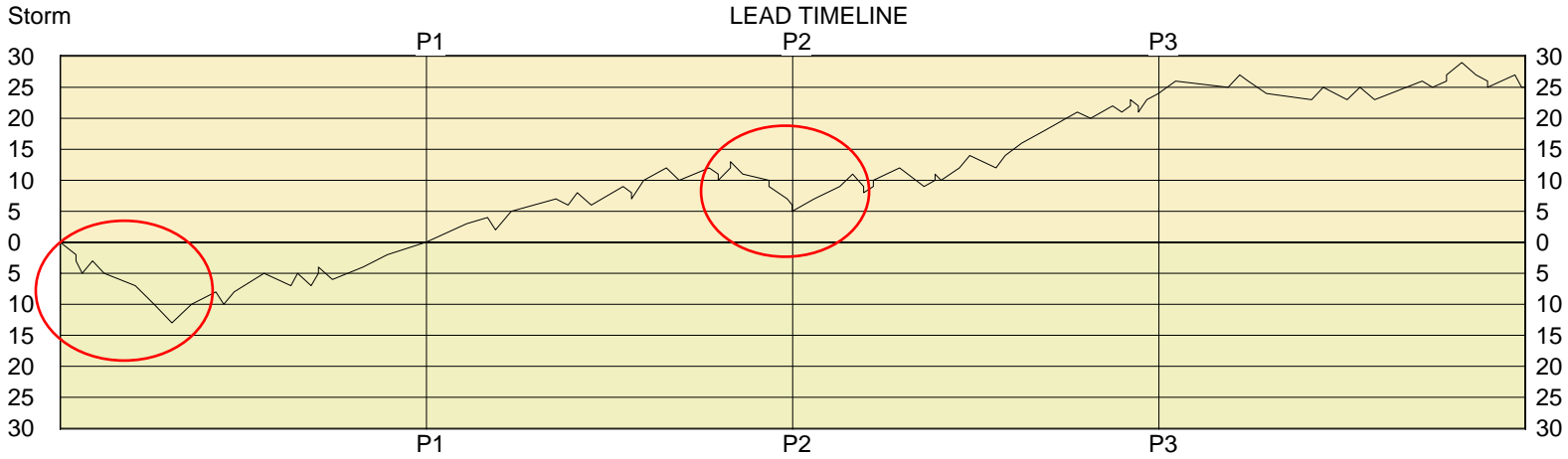
Score by Period	1st	2nd	3rd	4th	Final	Record	Overall	Conf
Minnesota Lynx	23	19	13	16	71	Lynx		
Seattle Storm	23	24	32	17	96	Storm		

Storm Lynx	Points off Turnovers	10	16	Storm Lynx	Second Effort Points	12	3	Storm Lynx	Bench Points	40	29
	Points in the Paint	16	18		3 Point Points	24	9		Free Throw Points	12	22
	3pt Efficiency	-0.4	+32.8		Points/Shot	1.32	1.03		Defensive Stops	42	32
	Largest Lead	94	65 (29 pts)		Lead Changes	1			Number of Ties	1	

Game comments: None

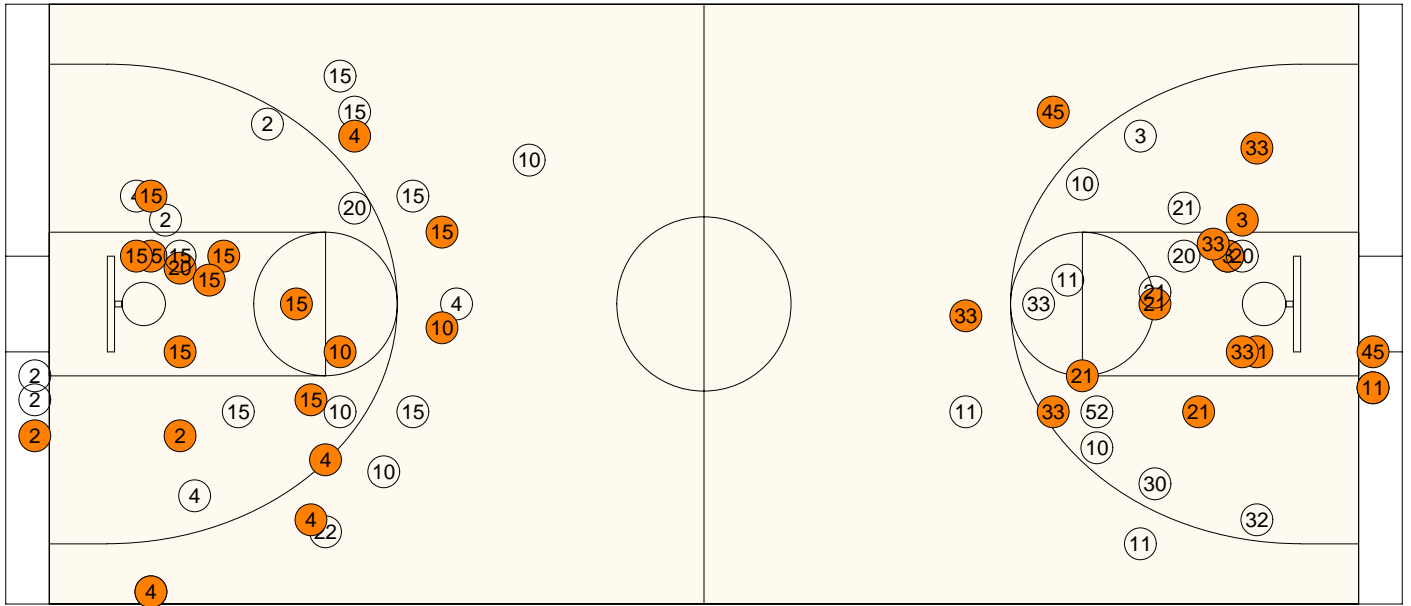
CybersportsUSA Basketball - Game Leaders
Seattle Storm vs. Minnesota Lynx
Date: 07/05/2008 Time: 7:00pm Site: Seattle

Scoring						Field Goals					
Seattle	96	Minnesota	71	Seattle	30/47	63.8	Minnesota	20/49	40.8		
15 L Jackson	32	21 N Anosike	15	15 L Jackson	12/14	85.7	33 S Augustus	5/8	62.5		
4 K Geraldts	17	33 S Augustus	14	30 T Wright	5/6	83.3	11 C Wiggins	4/6	66.7		
10 S Bird	14	11 C Wiggins	14	10 S Bird	4/6	66.7	21 N Anosike	4/9	44.4		
30 T Wright	11	45 N Quinn	7	9 K Santos	2/2	100	3 N Ohlde	2/4	50.0		
2 S Cash	8	3 N Ohlde	6	20 Little	2/4	50.0	32 L Thomas	2/4	50.0		
3Pt Field Goals						Free Throws					
Seattle	8/19	42.1	Minnesota	3/5	60.0	Seattle	12/15	80.0	Minnesota	22/31	71.0
4 K Geraldts	4/6	66.7	33 S Augustus	1/1	100	2 S Cash	4/4	100	21 N Anosike	7/9	77.8
10 S Bird	2/5	40.0	45 N Quinn	1/1	100	15 L Jackson	2/2	100	11 C Wiggins	6/7	85.7
15 L Jackson	2/7	28.6	52 K Rasmussen	1/1	100	20 Little	2/2	100	10 L Harding	3/6	50.0
Total Rebounds						Fouls					
Seattle	13/29	42	Minnesota	7/17	24	Seattle	2/21	23	Minnesota	4/18	22
15 L Jackson	1/5	6	33 S Augustus	0/4	4	30 T Wright	0/5	5	21 N Anosike	0/4	4
22 S Swoopes	0/5	5	21 N Anosike	3/1	4	0 S Ely	0/4	4	11 C Wiggins	0/4	4
2 S Cash	1/3	4	3 N Ohlde	0/3	3	2 S Cash	0/3	3	55 V Hayden	1/3	4
0 S Ely	0/4	4	32 L Thomas	1/2	3	13 Y Griffith	0/3	3	20 C Houston	0/3	3
30 T Wright	2/2	4	45 N Quinn	0/2	2	4 K Geraldts	0/2	2	3 N Ohlde	1/1	2
Offensive Rebounds						Steals					
Seattle	13	Minnesota	7	Seattle	4	Minnesota	8				
30 T Wright	2	21 N Anosike	3	0 S Ely	1	10 L Harding	3				
2 S Cash	1	10 L Harding	1	4 K Geraldts	1	11 C Wiggins	2				
4 K Geraldts	1	20 C Houston	1	13 Y Griffith	1	45 N Quinn	1				
15 L Jackson	1	32 L Thomas	1	30 T Wright	1	55 V Hayden	1				
20 Little	1					52 K Rasmussen	1				
Defensive Rebounds						Assists					
Seattle	29	Minnesota	17	Seattle	21	Minnesota	9				
15 L Jackson	5	33 S Augustus	4	10 S Bird	8	10 L Harding	3				
22 S Swoopes	5	3 N Ohlde	3	30 T Wright	3	3 N Ohlde	2				
0 S Ely	4	45 N Quinn	2	20 Little	3	45 N Quinn	2				
2 S Cash	3	11 C Wiggins	2	4 K Geraldts	2	33 S Augustus	1				
13 Y Griffith	3	32 L Thomas	2	22 S Swoopes	2	11 C Wiggins	1				
Turn Overs						Blocks					
Seattle	15	Minnesota	13	Seattle	2	Minnesota	3				
10 S Bird	3	3 N Ohlde	2	4 K Geraldts	1	21 N Anosike	2				
0 S Ely	3	45 N Quinn	2	20 Little	1	3 N Ohlde	1				
30 T Wright	3	11 C Wiggins	2								
15 L Jackson	2	30 A DeForge	1								
4 K Geraldts	1	10 L Harding	1								
Charges Taken						2nd Chance Points					
Seattle	4	Minnesota	2	Seattle	12	Minnesota	3				
15 L Jackson	1	55 V Hayden	1	15 L Jackson	7	21 N Anosike	3				
				10 S Bird	3						
				20 Little	2						
Defensive Assists						Productivity					
Seattle	1	Minnesota	0	Seattle	106	Minnesota	45.5				
4 K Geraldts	1			15 L Jackson	26.5	33 S Augustus	15.0				
				4 K Geraldts	15.5	21 N Anosike	11.5				
				10 S Bird	14.0	45 N Quinn	9.00				
				20 Little	12.5	11 C Wiggins	8.00				
				30 T Wright	10.0	3 N Ohlde	6.00				



Largest Lead Sea 94 Min 65 (29 pts) Lead Changes 1 Number of Ties 1

FIRST HALF



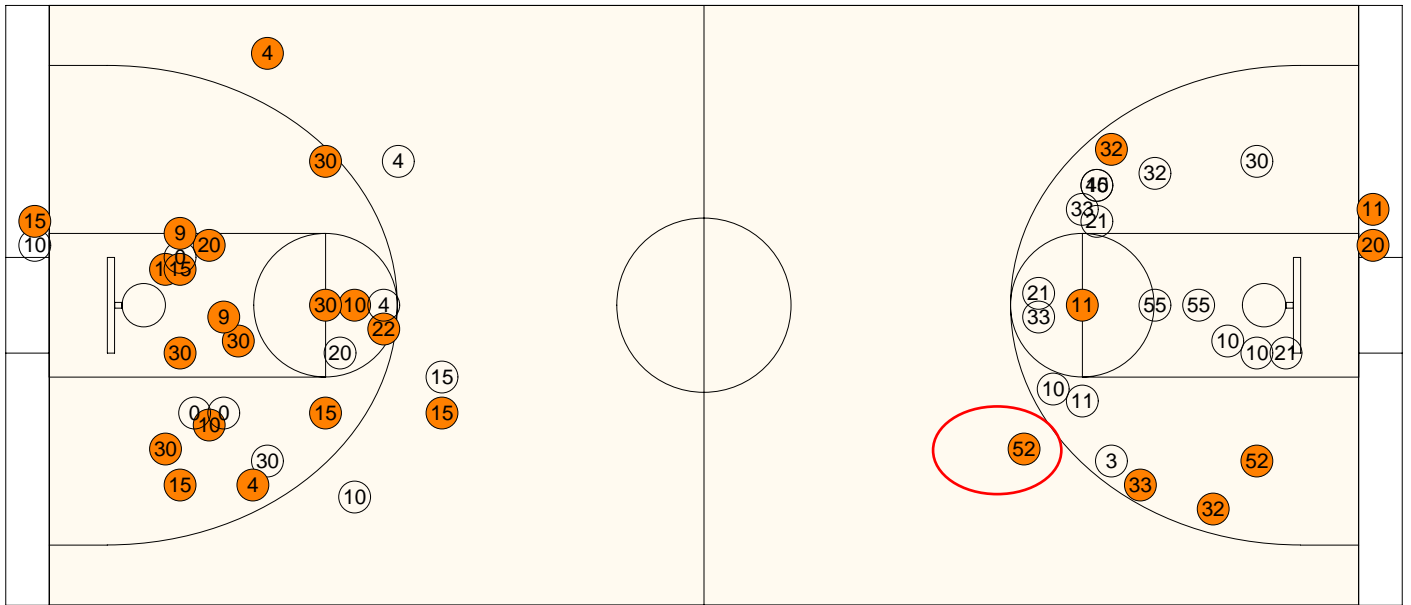
Seattle

Shooting	Pts	Pts	
2FG 13/23 (56.5%)	26	Pts/Shot	1.21
3FG 6/14 (42.9%)	18	2nd Eff Pts	7
TFG 19/37 (51.4%)		Pts off TO's	2
FT 3/4 (75.0%)	3	3Pt Eff	+5.2
Scoring Distribution: 2FG 55.3% 3FG 38.3% FT 6.4%			

Minnesota

Shooting	Pts	Pts	
2FG 13/26 (50.0%)	26	Pts/Shot	1.20
3FG 2/4 (50.0%)	6	2nd Eff Pts	1
TFG 15/30 (50.0%)		Pts off TO's	9
FT 10/11 (90.9%)	10	3Pt Eff	+16.7
Scoring Distribution: 2FG 61.9% 3FG 14.3% FT 23.8%			

SECOND HALF



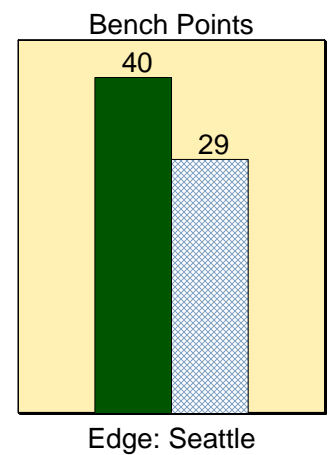
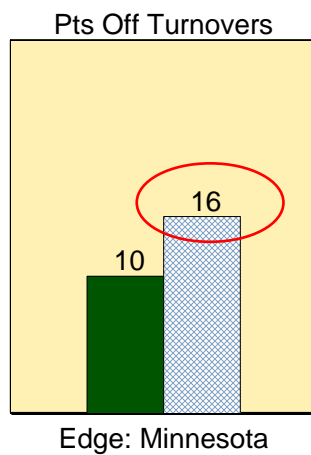
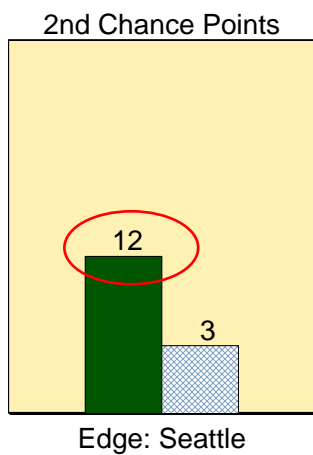
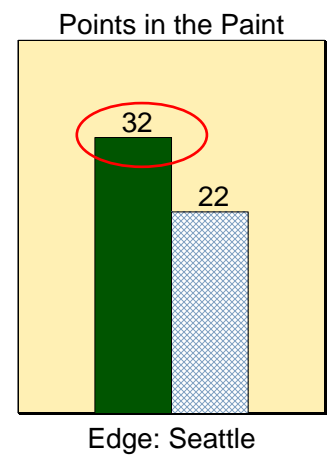
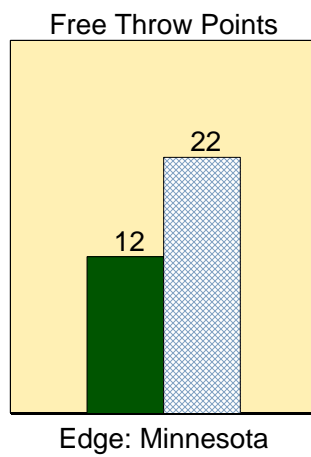
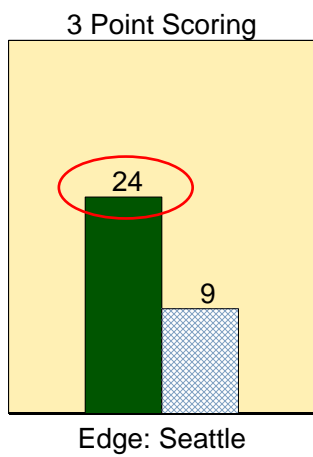
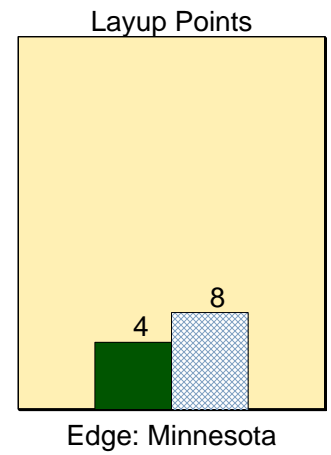
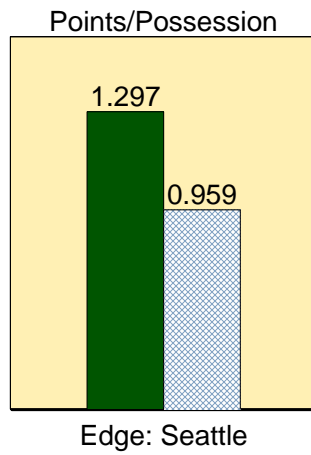
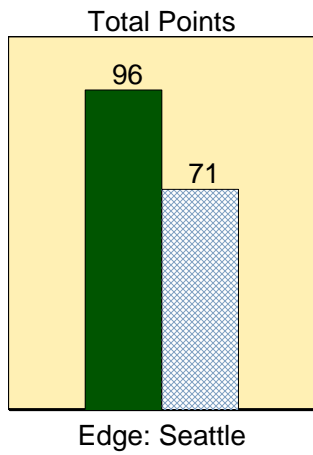
Seattle

2FG 17/24 (70.8%)	34	Pts/Shot	1.44
3FG 2/5 (40.0%)	6	2nd Eff Pts	5
TFG 19/29 (65.5%)		Pts off TO's	8
FT 9/11 (81.8%)	9	3Pt Eff	-7.2
Scoring Distribution: 2FG 69.4% 3FG 12.2% FT 18.4%			

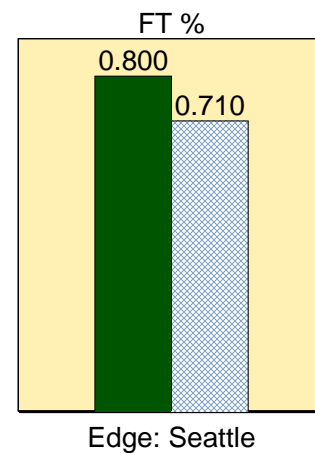
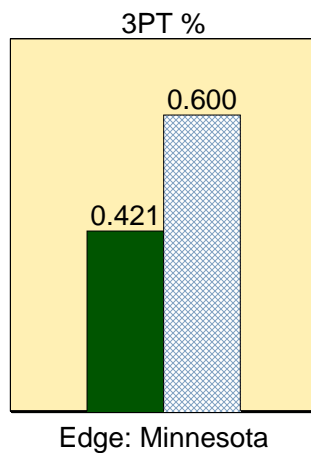
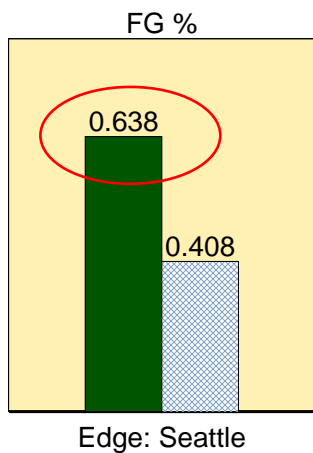
Minnesota

2FG 7/23 (30.4%)	14	Pts/Shot	0.85
3FG 1/1 (100%)	3	2nd Eff Pts	2
TFG 8/24 (33.3%)		Pts off TO's	7
FT 12/20 (60.0%)	12	3Pt Eff	+79.7
Scoring Distribution: 2FG 48.3% 3FG 10.3% FT 41.4%			

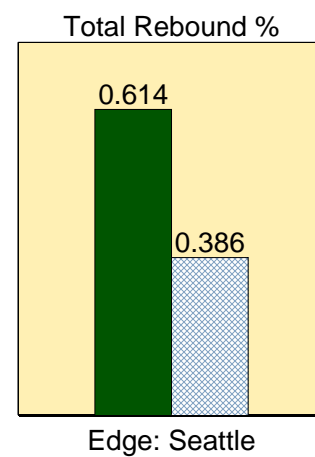
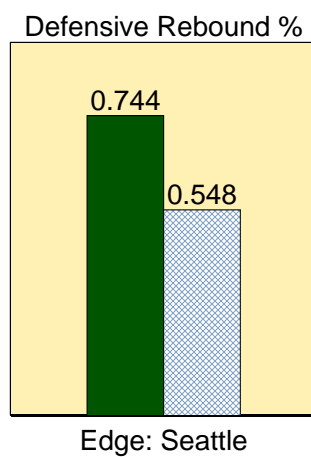
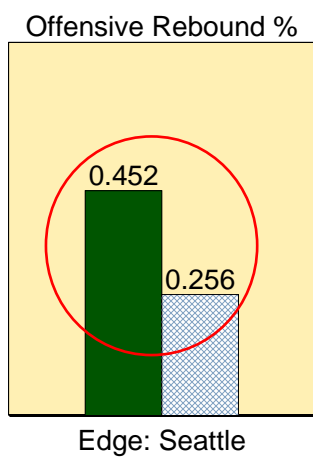
SCORING



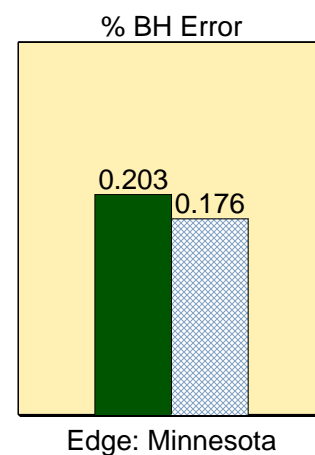
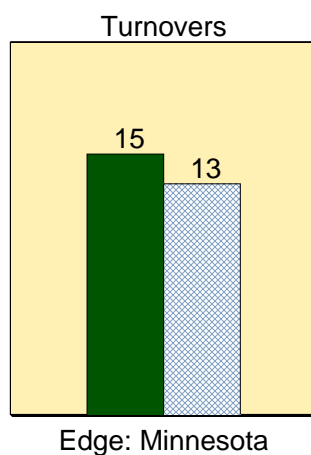
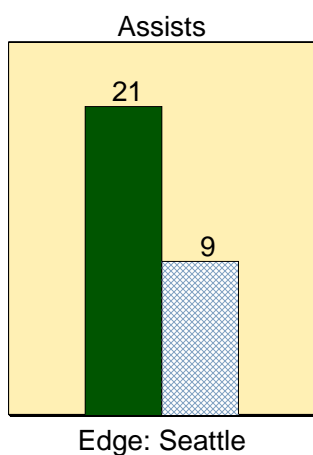
SHOOTING



REBOUNDING

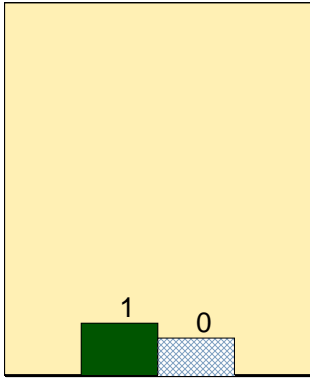


BALL HANDLING



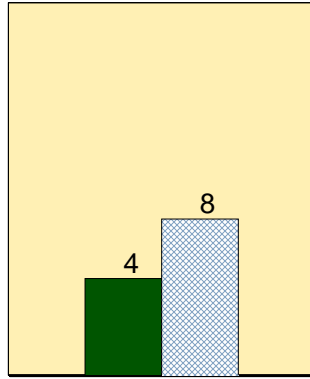
DEFENSE

Defensive Assists



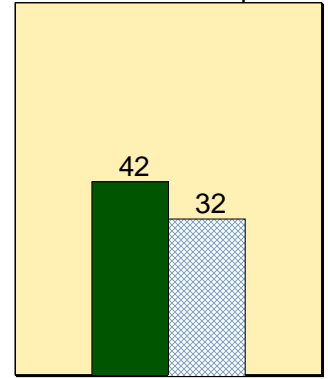
Edge: Seattle

Steals



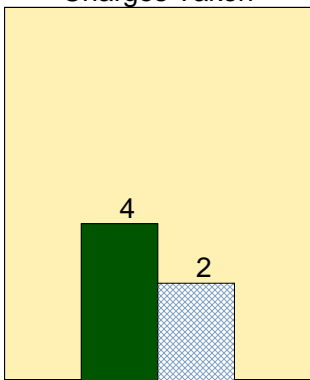
Edge: Minnesota

Defensive Stops



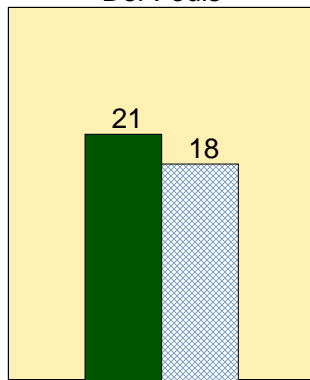
Edge: Seattle

Charges Taken



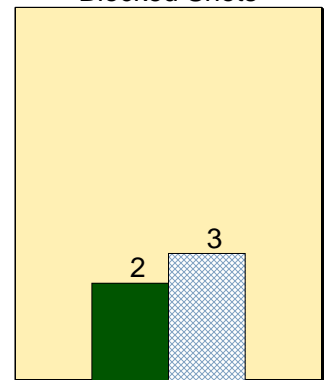
Edge: Seattle

Def Fouls



Edge: Minnesota

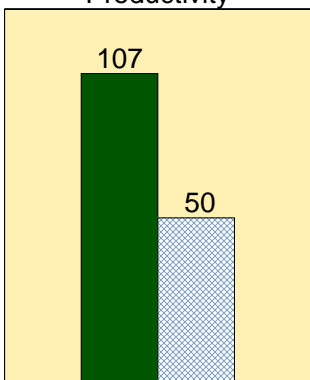
Blocked Shots



Edge: Minnesota

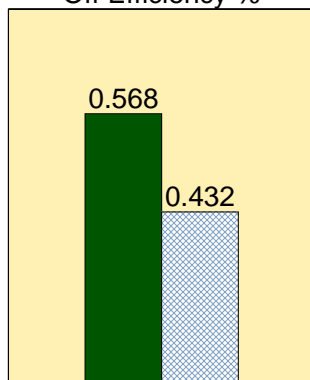
MISCELLANEOUS

Productivity



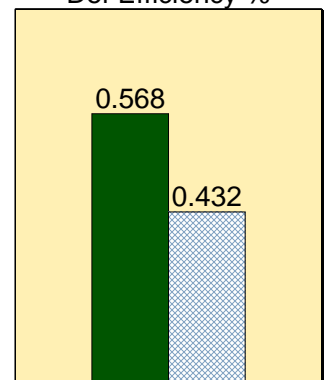
Edge: Seattle

Off Efficiency %



Edge: Seattle

Def Efficiency %



Edge: Seattle

LINEUP COMBINATION ANALYSIS for the Minnesota Lynx

Seattle Storm vs. Minnesota Lynx

Date: 07/05/2008 Time: 7:00pm Site: Seattle

Most Often Used Lineup:	3-N Ohlde, 21-N Anosike, 30-A DeForge, 33-S Augustus, 45-N Quinn
Most Productive Offensive Lineup:	3-N Ohlde, 11-C Wiggins, 21-N Anosike, 33-S Augustus, 45-N Quinn
Most Productive Rebounding Lineup:	3-N Ohlde, 11-C Wiggins, 21-N Anosike, 33-S Augustus, 45-N Quinn
Best Defensive Combination:	10-L Harding, 11-C Wiggins, 20-C Houston, 32-L Thomas, 55-V Hayden
Best Lineup to Force Turnovers:	10-L Harding, 11-C Wiggins, 20-C Houston, 32-L Thomas, 52-K Rasmussen
Best Overall Lineup:	3-N Ohlde, 11-C Wiggins, 21-N Anosike, 33-S Augustus, 45-N Quinn
Best Free Throw Shooting Lineup:	3-N Ohlde, 11-C Wiggins, 21-N Anosike, 33-S Augustus, 45-N Quinn

LINEUPS SORTED BY PLAYING TIME

PLAYERS	TIME	PTS
3-N Ohlde, 21-N Anosike, 30-A DeForge, 33-S Augustus, 45-N Quinn	8.75	+0
10-L Harding, 11-C Wiggins, 20-C Houston, 32-L Thomas, 55-V Hayden	5.98	+1
3-N Ohlde, 11-C Wiggins, 33-S Augustus, 45-N Quinn, 52-K Rasmussen	3.85	-9
10-L Harding, 11-C Wiggins, 20-C Houston, 32-L Thomas, 52-K Rasmussen	3.57	-2
10-L Harding, 11-C Wiggins, 21-N Anosike, 33-S Augustus, 52-K Rasmussen	3.30	-5
3-N Ohlde, 11-C Wiggins, 21-N Anosike, 30-A DeForge, 45-N Quinn	3.13	-6
3-N Ohlde, 11-C Wiggins, 21-N Anosike, 33-S Augustus, 45-N Quinn	2.68	+6
10-L Harding, 11-C Wiggins, 20-C Houston, 21-N Anosike, 33-S Augustus	2.05	-3
3-N Ohlde, 20-C Houston, 32-L Thomas, 33-S Augustus, 45-N Quinn	2.00	-3
11-C Wiggins, 33-S Augustus, 45-N Quinn, 52-K Rasmussen, 55-V Hayden	1.65	-2

LINEUPS SORTED BY POINT DIFFERENTIAL PER MINUTE

PLAYERS	PPM	NORM	PTS	TIME
3-N Ohlde, 11-C Wiggins, 21-N Anosike, 33-S Augustus, 45-N Quinn	+2.24	+89.44	+6	2.68
10-L Harding, 11-C Wiggins, 20-C Houston, 32-L Thomas, 55-V Hayden	+0.17	+6.69	+1	5.98
3-N Ohlde, 21-N Anosike, 30-A DeForge, 33-S Augustus, 45-N Quinn	+0.00	+0.00	+0	8.75
10-L Harding, 11-C Wiggins, 20-C Houston, 32-L Thomas, 52-K Rasmussen	-0.56	-22.43	-2	3.57
11-C Wiggins, 33-S Augustus, 45-N Quinn, 52-K Rasmussen, 55-V Hayden	-1.21	-48.48	-2	1.65
10-L Harding, 11-C Wiggins, 20-C Houston, 21-N Anosike, 33-S Augustus	-1.46	-58.54	-3	2.05
3-N Ohlde, 20-C Houston, 32-L Thomas, 33-S Augustus, 45-N Quinn	-1.50	-60.00	-3	2.00
10-L Harding, 11-C Wiggins, 21-N Anosike, 33-S Augustus, 52-K Rasmussen	-1.52	-60.61	-5	3.30
3-N Ohlde, 11-C Wiggins, 21-N Anosike, 30-A DeForge, 45-N Quinn	-1.91	-76.60	-6	3.13
3-N Ohlde, 11-C Wiggins, 33-S Augustus, 45-N Quinn, 52-K Rasmussen	-2.34	-93.51	-9	3.85

LINEUPS SORTED BY REBOUND DIFFERENTIAL PER MINUTE

PLAYERS	RPM	NORM	REB	TIME
3-N Ohlde, 11-C Wiggins, 21-N Anosike, 33-S Augustus, 45-N Quinn	+0.37	+14.91	+1	2.68
10-L Harding, 11-C Wiggins, 20-C Houston, 32-L Thomas, 55-V Hayden	+0.17	+6.69	+1	5.98
11-C Wiggins, 33-S Augustus, 45-N Quinn, 52-K Rasmussen, 55-V Hayden	+0.00	+0.00	+0	1.65
3-N Ohlde, 21-N Anosike, 30-A DeForge, 33-S Augustus, 45-N Quinn	-0.11	-4.57	-1	8.75
10-L Harding, 11-C Wiggins, 20-C Houston, 21-N Anosike, 33-S Augustus	-0.49	-19.51	-1	2.05
3-N Ohlde, 20-C Houston, 32-L Thomas, 33-S Augustus, 45-N Quinn	-0.50	-20.00	-1	2.00
10-L Harding, 11-C Wiggins, 20-C Houston, 32-L Thomas, 52-K Rasmussen	-0.84	-33.64	-3	3.57
3-N Ohlde, 11-C Wiggins, 21-N Anosike, 30-A DeForge, 45-N Quinn	-0.96	-38.30	-3	3.13
3-N Ohlde, 11-C Wiggins, 33-S Augustus, 45-N Quinn, 52-K Rasmussen	-1.04	-41.56	-4	3.85
10-L Harding, 11-C Wiggins, 21-N Anosike, 33-S Augustus, 52-K Rasmussen	-1.82	-72.73	-6	3.30

Total time captured in lineups: 36.97
Productive scoring minutes: 8.67
Productive scoring percentage: 23.44%

Productive rebounding minutes: 8.67
Productive rebounding percentage: 23.44%

DEFENSIVE LINEUP COMBINATION ANALYSIS for the Minnesota Lynx

Seattle Storm vs. Minnesota Lynx

Date: 07/05/2008 Time: 7:00pm Site: Seattle

LINEUP SORTED BY DEFENSIVE POSSESSIONS

PLAYERS	Oppo Pts	Def Poss
3-N Ohlde, 21-N Anosike, 30-A DeForge, 33-S Augustus, 45-N Quinn	20	16
10-L Harding, 11-C Wiggins, 20-C Houston, 32-L Thomas, 55-V Hayden	8	12
3-N Ohlde, 11-C Wiggins, 33-S Augustus, 45-N Quinn, 52-K Rasmussen	11	7
10-L Harding, 11-C Wiggins, 20-C Houston, 32-L Thomas, 52-K Rasmussen	9	7
10-L Harding, 11-C Wiggins, 21-N Anosike, 33-S Augustus, 52-K Rasmussen	9	5
3-N Ohlde, 11-C Wiggins, 21-N Anosike, 30-A DeForge, 45-N Quinn	10	5
3-N Ohlde, 11-C Wiggins, 21-N Anosike, 33-S Augustus, 45-N Quinn	5	5
11-C Wiggins, 33-S Augustus, 45-N Quinn, 52-K Rasmussen, 55-V Hayden	6	4
10-L Harding, 11-C Wiggins, 20-C Houston, 21-N Anosike, 33-S Augustus	7	4
3-N Ohlde, 20-C Houston, 32-L Thomas, 33-S Augustus, 45-N Quinn	5	3

LINEUP SORTED BY POINTS PER POSSESSION ALLOWED

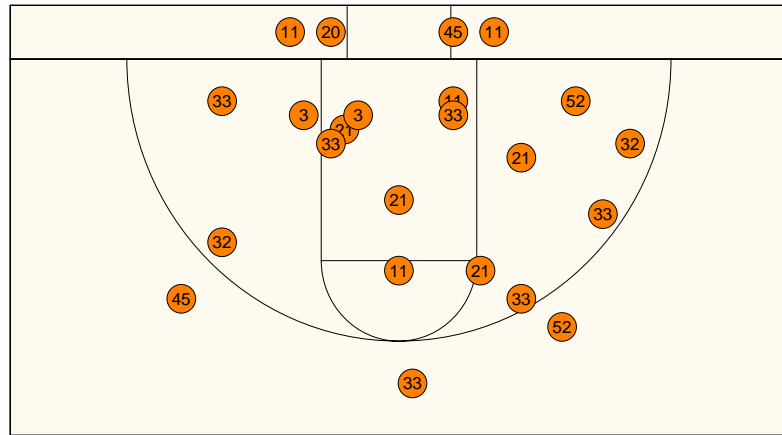
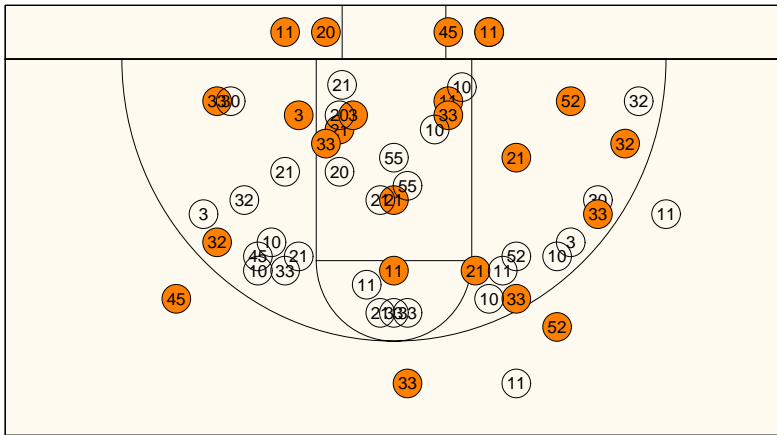
PLAYERS	Pts/Poss	Def Poss
10-L Harding, 11-C Wiggins, 20-C Houston, 32-L Thomas, 55-V Hayden	0.67	12
3-N Ohlde, 11-C Wiggins, 21-N Anosike, 33-S Augustus, 45-N Quinn	1.00	5
3-N Ohlde, 21-N Anosike, 30-A DeForge, 33-S Augustus, 45-N Quinn	1.25	16
10-L Harding, 11-C Wiggins, 20-C Houston, 32-L Thomas, 52-K Rasmussen	1.29	7
11-C Wiggins, 33-S Augustus, 45-N Quinn, 52-K Rasmussen, 55-V Hayden	1.50	4
3-N Ohlde, 11-C Wiggins, 33-S Augustus, 45-N Quinn, 52-K Rasmussen	1.57	7
3-N Ohlde, 20-C Houston, 32-L Thomas, 33-S Augustus, 45-N Quinn	1.67	3
10-L Harding, 11-C Wiggins, 20-C Houston, 21-N Anosike, 33-S Augustus	1.75	4
10-L Harding, 11-C Wiggins, 21-N Anosike, 33-S Augustus, 52-K Rasmussen	1.80	5
3-N Ohlde, 11-C Wiggins, 21-N Anosike, 30-A DeForge, 45-N Quinn	2.00	5

LINEUP SORTED BY DEFENSIVE EFFICIENCY (STOPS)

PLAYERS	Def Eff	Def Stops	Def Poss
10-L Harding, 11-C Wiggins, 20-C Houston, 32-L Thomas, 52-K Rasmussen	0.71	5	7
10-L Harding, 11-C Wiggins, 20-C Houston, 32-L Thomas, 55-V Hayden	0.67	8	12
3-N Ohlde, 11-C Wiggins, 21-N Anosike, 33-S Augustus, 45-N Quinn	0.60	3	5
3-N Ohlde, 21-N Anosike, 30-A DeForge, 33-S Augustus, 45-N Quinn	0.44	7	16
3-N Ohlde, 20-C Houston, 32-L Thomas, 33-S Augustus, 45-N Quinn	0.33	1	3
3-N Ohlde, 11-C Wiggins, 33-S Augustus, 45-N Quinn, 52-K Rasmussen	0.29	2	7
11-C Wiggins, 33-S Augustus, 45-N Quinn, 52-K Rasmussen, 55-V Hayden	0.25	1	4
10-L Harding, 11-C Wiggins, 21-N Anosike, 33-S Augustus, 52-K Rasmussen	0.20	1	5
3-N Ohlde, 11-C Wiggins, 21-N Anosike, 30-A DeForge, 45-N Quinn	0.20	1	5
10-L Harding, 11-C Wiggins, 20-C Houston, 21-N Anosike, 33-S Augustus	0.00	0	4

LINEUP SORTED BY PERCENTAGE OF BALL HANDLING ERRORS FORCED

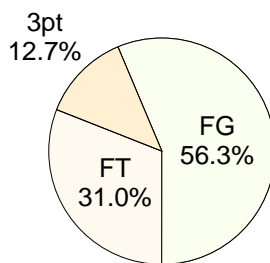
PLAYERS	% BH Err	Oppo To	Def Poss
10-L Harding, 11-C Wiggins, 20-C Houston, 32-L Thomas, 52-K Rasmussen	0.57	4	7
10-L Harding, 11-C Wiggins, 20-C Houston, 32-L Thomas, 55-V Hayden	0.33	4	12
11-C Wiggins, 33-S Augustus, 45-N Quinn, 52-K Rasmussen, 55-V Hayden	0.25	1	4
3-N Ohlde, 11-C Wiggins, 21-N Anosike, 33-S Augustus, 45-N Quinn	0.20	1	5
10-L Harding, 11-C Wiggins, 21-N Anosike, 33-S Augustus, 52-K Rasmussen	0.20	1	5
3-N Ohlde, 21-N Anosike, 30-A DeForge, 33-S Augustus, 45-N Quinn	0.19	3	16
3-N Ohlde, 20-C Houston, 32-L Thomas, 33-S Augustus, 45-N Quinn	0.00	0	3
3-N Ohlde, 11-C Wiggins, 33-S Augustus, 45-N Quinn, 52-K Rasmussen	0.00	0	7
3-N Ohlde, 11-C Wiggins, 21-N Anosike, 30-A DeForge, 45-N Quinn	0.00	0	5
10-L Harding, 11-C Wiggins, 20-C Houston, 21-N Anosike, 33-S Augustus	0.00	0	4



All Shots

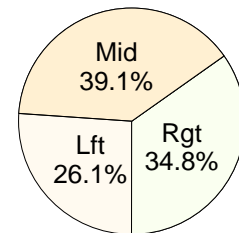
Shot Summary	M/A	%	PTS
3Pt FG	3/5	60.0%	9
2Pt FG	20/49	40.8%	40
Layups - L	2/2	100.0%	4
Layups - R	2/3	66.7%	4
Dunks	0/0	0.0%	0
Putbacks	0/1	0.0%	0
Overall Shooting	23/54	42.6%	49
Free Throws	22/31	71.0%	22
Paint Points			20
Pts off Steals			7
2nd Chance Pts			9
Total Points			71
Scoring Efficiency			
Points/Shot	1.03		
2pt Points/Shot	0.82		
3pt Points/Shot	1.80		
FT Points/Shot	0.71		
2pt/3pt Eff	+32.8		
Pts/Possession	0.93		
Shots/Possession	0.91		

Scoring Distribution

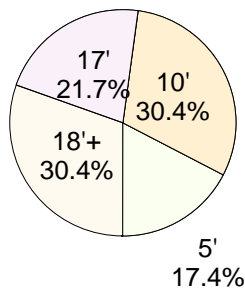


Made Shots

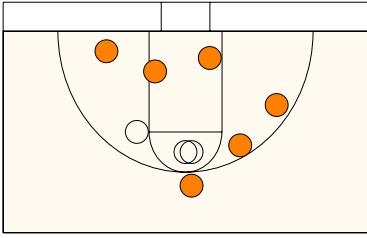
Scoring Locations



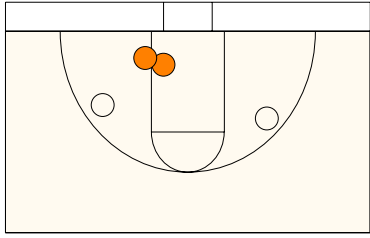
Scoring Range



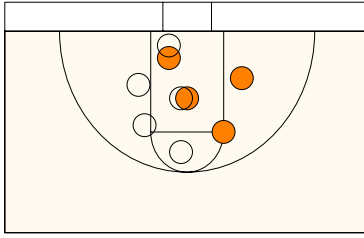
By Period	FG	FGA	FG%	3Pt	3PA	3P%	FT	FTA	FT%	PTS	ORB	DRB	TR	PF	AST	TO	BS	ST	P/S
1st Period	8	13	61.5	2	3	66.7	1	1	100	23	2	4	6	4	2	3	2	2	1.44
2nd Period	5	13	38.5	0	1	0.00	9	10	90.0	19	2	6	8	3	3	1	1	1	1.00
3rd Period	2	12	16.7	1	1	100	6	10	60.0	13	2	2	4	7	1	4	0	0	0.72
4th Period	5	11	45.5	0	0	0.00	6	10	60.0	16	1	5	6	8	3	5	0	5	1.00
Game	20	49	40.8	3	5	60.0	22	31	71.0	71	7	17	24	22	9	13	3	8	1.03



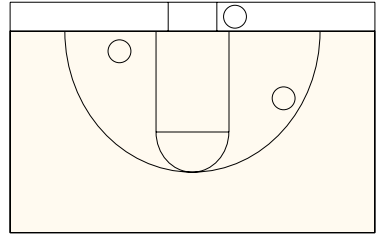
33 S Augustus



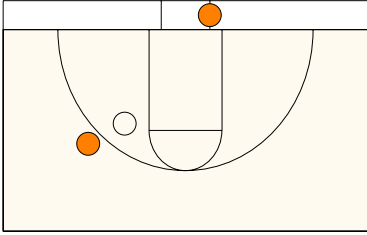
3 N Ohlde



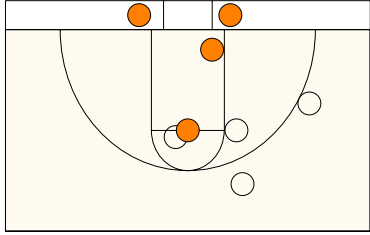
21 N Anosike



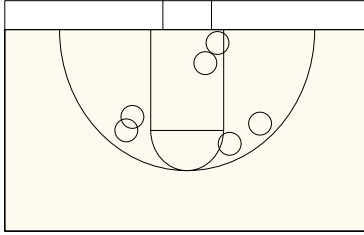
30 A DeForge



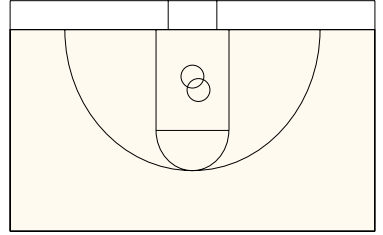
45 N Quinn



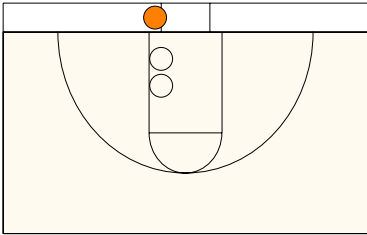
11 C Wiggins



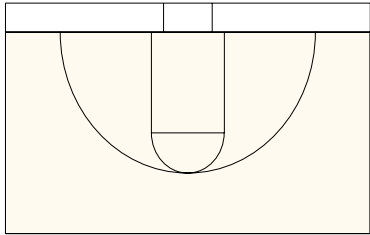
10 L Harding



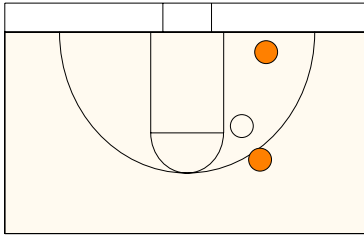
55 V Hayden



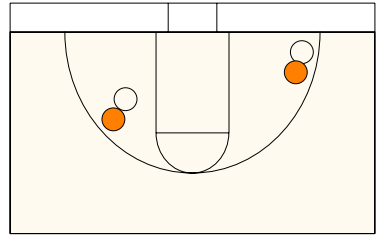
20 C Houston



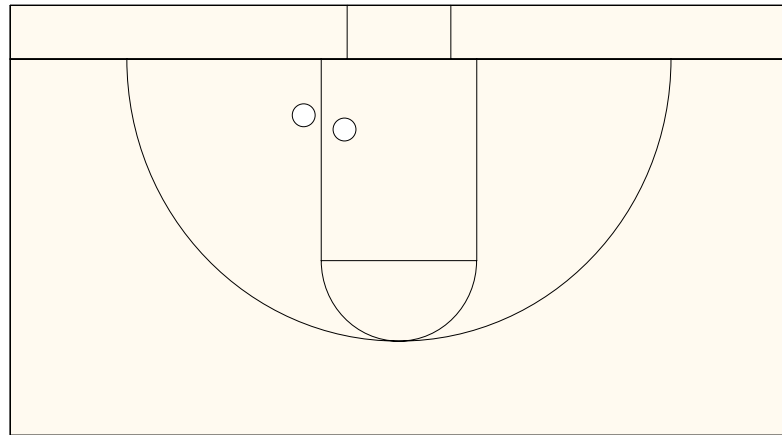
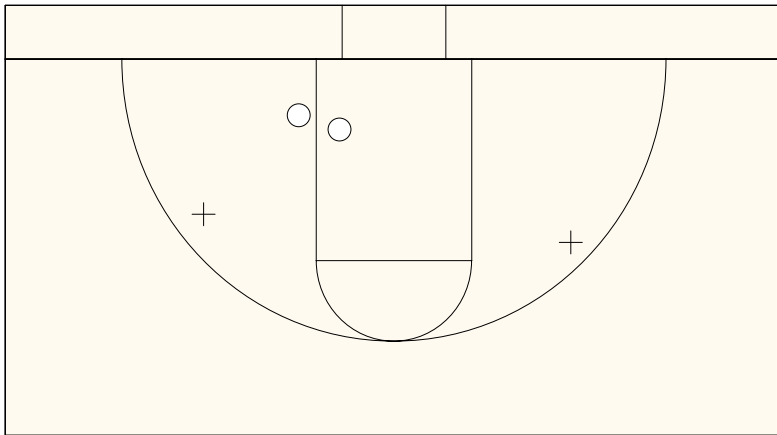
34 N Moore



52 K Rasmussen



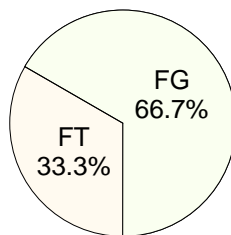
32 L Thomas



All Shots

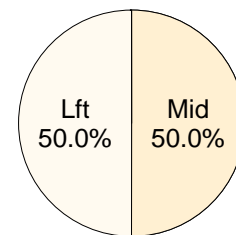
Shot Summary	M/A	%	PTS
3Pt FG	0/0	0.0%	0
2Pt FG	2/4	50.0%	4
Layups - L	0/0	0.0%	0
Layups - R	0/0	0.0%	0
Dunks	0/0	0.0%	0
Putbacks	0/0	0.0%	0
Overall Shooting	2/4	50.0%	4
Free Throws	2/2	100.0%	2
Paint Points			2
Pts off Steals			0
2nd Chance Pts			0
Total Points			6
Scoring Efficiency			
Points/Shot	1.20		
2pt Points/Shot	1.00		
3pt Points/Shot	0.00		
FT Points/Shot	1.00		
2pt/3pt Eff			

Scoring Distribution

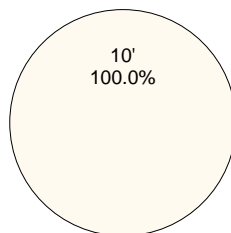


Made Shots

Scoring Locations



Scoring Range



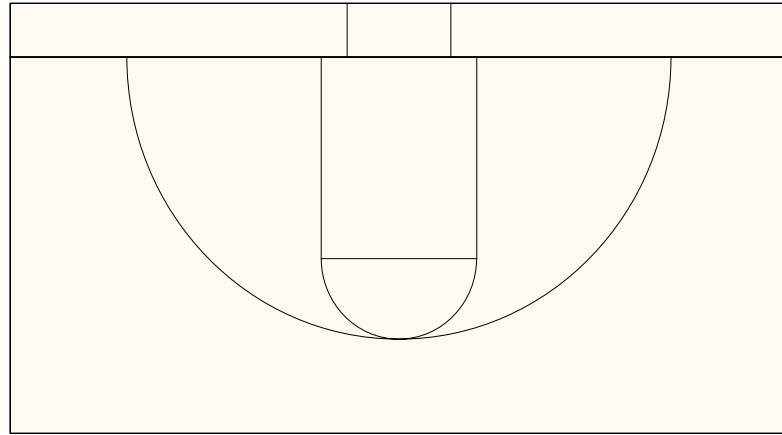
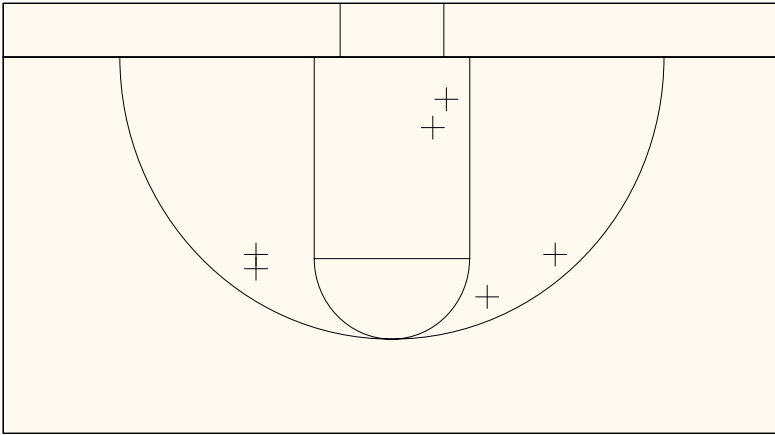
By Period	FG	FGA	FG%	3Pt	3PA	3P%	FT	FTA	FT%	PTS	ORB	DRB	TR	PF	AST	TO	BS	ST	P/S	MIN
1st Period	1	1	100.0	0	0	0.00	0	0	0.00	2	0	1	1	1	1	2	1	0	2.00	6:42
2nd Period	1	2	50.0	0	0	0.00	2	2	100.0	4	0	2	2	1	1	0	0	0	1.33	9:07
3rd Period	0	1	0.00	0	0	0.00	0	0	0.00	0	0	0	0	0	0	0	0	0	0.00	6:18
4th Period	0	0	0.00	0	0	0.00	0	0	0.00	0	0	0	0	0	0	0	0	0	0.00	DNP
Game	2	4	50.0	0	0	0.00	2	2	100.0	6	0	3	3	2	2	2	1	0	1.20	22:07

By Time	FG	FGA	FG%	3Pt	3PA	3P%	FT	FTA	FT%	PTS	ORB	DRB	TR	PF	AST	TO	BS	ST	DA
Per Minute	0.09	0.18	50.0	0	0	0.00	0.09	0.09	100	0.27	0	0.14	0.14	0.09	0.09	0.09	0.05	0	0
Normal Game	3.62	7.23	50.0	0	0	0.00	3.62	3.62	100	10.9	0	5.43	5.43	3.62	3.62	3.62	1.81	0	0

CybersportsUSA Basketball - INDIVIDUAL SHOT CHART for Lindsey Harding

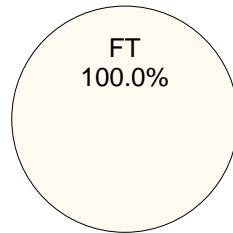
Seattle Storm vs. Minnesota Lynx

DATE: 07/05/2008 TIME: 7:00pm SITE: Seattle

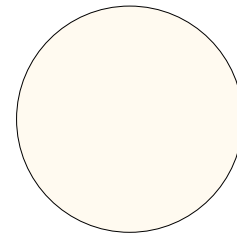


Shot Summary	All Shots		
	M/A	%	PTS
3Pt FG	0/0	0.0%	0
2Pt FG	0/6	0.0%	0
Layups - L	0/0	0.0%	0
Layups - R	0/0	0.0%	0
Dunks	0/0	0.0%	0
Putbacks	0/0	0.0%	0
Overall Shooting	0/6	0.0%	0
Free Throws	3/6	50.0%	3
Paint Points			0
Pts off Steals			1
2nd Chance Pts			0
Total Points			3
Scoring Efficiency			
Points/Shot	0.33		
2pt Points/Shot	0.00		
3pt Points/Shot	0.00		
FT Points/Shot	0.50		
2pt/3pt Eff			

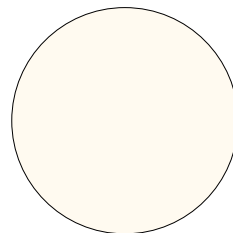
Scoring Distribution



Scoring Locations



Scoring Range



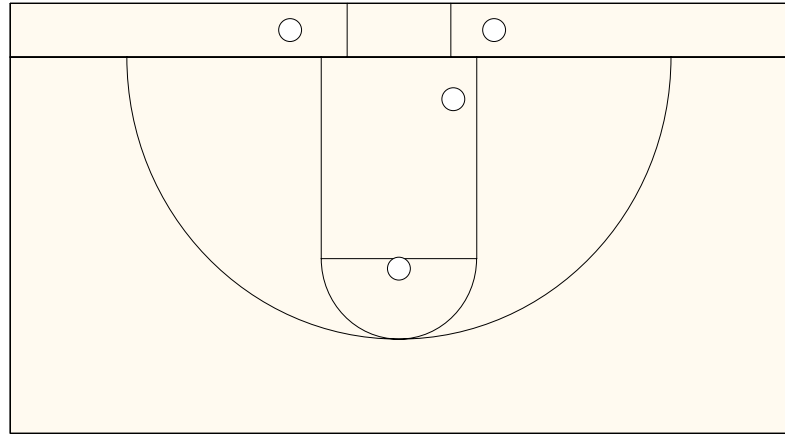
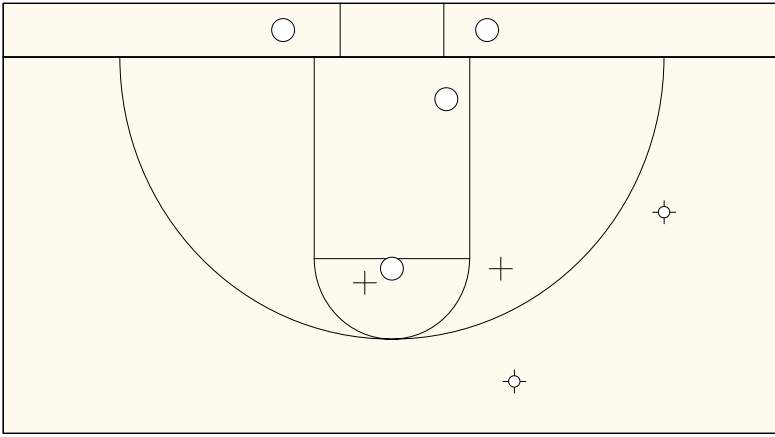
By Period	FG	FGA	FG%	3Pt	3PA	3P%	FT	FTA	FT%	PTS	ORB	DRB	TR	PF	AST	TO	BS	ST	P/S	MIN
1st Period	0	2	0.00	0	0	0.00	0	0	0.00	0	1	0	1	0	0	0	0	1	0.00	4:13
2nd Period	0	0	0.00	0	0	0.00	0	0	0.00	0	0	0	0	1	0	0	0	0	0.00	1:41
3rd Period	0	1	0.00	0	0	0.00	1	2	50.0	1	0	0	0	0	0	0	0	0	0.50	2:02
4th Period	0	3	0.00	0	0	0.00	2	4	50.0	2	0	0	0	1	3	1	0	2	0.40	10:00
Game	0	6	0.00	0	0	0.00	3	6	50.0	3	1	0	1	2	3	1	0	3	0.33	17:56

By Time	FG	FGA	FG%	3Pt	3PA	3P%	FT	FTA	FT%	PTS	ORB	DRB	TR	PF	AST	TO	BS	ST	DA
Per Minute	0	0.33	0.00	0	0	0.00	0.17	0.33	50.0	0.17	0.06	0	0.06	0.11	0.17	0.06	0	0.17	0
Normal Game	0	13.4	0.00	0	0	0.00	6.69	13.4	50.0	6.69	2.23	0	2.23	4.46	6.69	2.23	0	6.69	0

CybersportsUSA Basketball - INDIVIDUAL SHOT CHART for Candice Wiggins

Seattle Storm vs. Minnesota Lynx

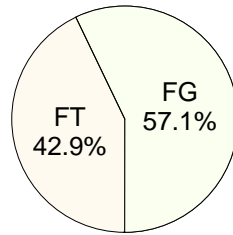
DATE: 07/05/2008 TIME: 7:00pm SITE: Seattle



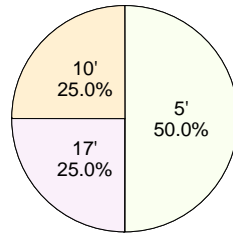
All Shots

Shot Summary	M/A	%	PTS
3Pt FG	0/2	0.0%	0
2Pt FG	4/6	66.7%	8
Layups - L	1/1	100.0%	2
Layups - R	1/1	100.0%	2
Dunks	0/0	0.0%	0
Putbacks	0/0	0.0%	0
Overall Shooting	4/8	50.0%	8
Free Throws	6/7	85.7%	6
Paint Points			6
Pts off Steals			0
2nd Chance Pts			0
Total Points			14
Scoring Efficiency			
Points/Shot	1.27		
2pt Points/Shot	1.33		
3pt Points/Shot	0.00		
FT Points/Shot	0.86		
2pt/3pt Eff	-44.4		

Scoring Distribution

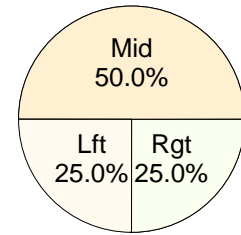


Scoring Range



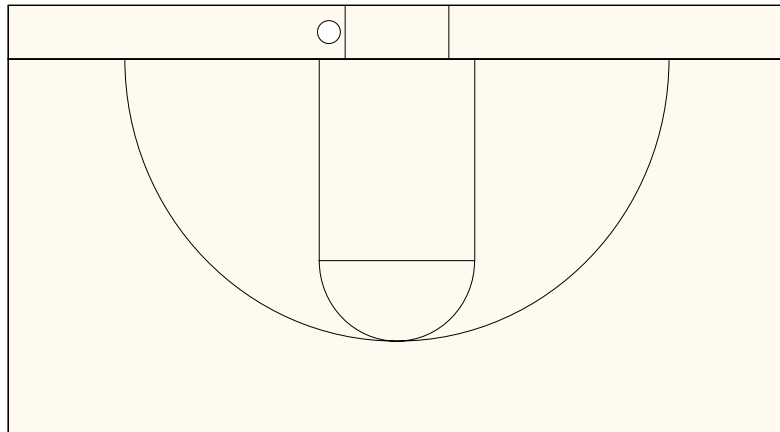
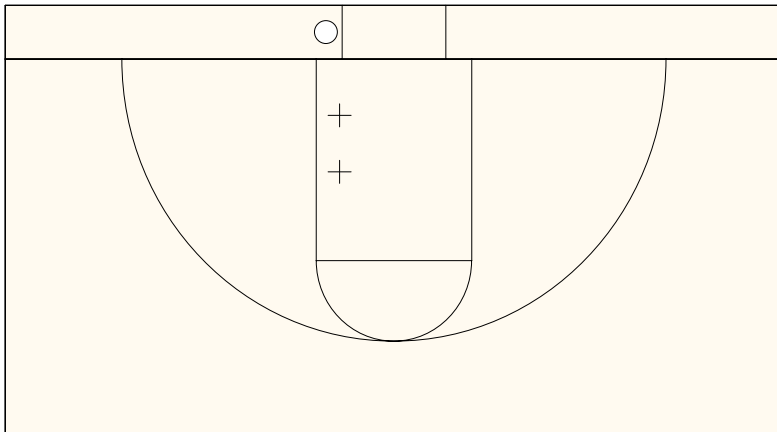
Made Shots

Scoring Locations



By Period	FG	FGA	FG%	3Pt	3PA	3P%	FT	FTA	FT%	PTS	ORB	DRB	TR	PF	AST	TO	BS	ST	P/S	MIN
1st Period	1	1	100	0	1	0.00	0	0	0.00	2	0	0	0	2	0	0	0	0	1.00	4:13
2nd Period	1	2	50.0	0	1	0.00	2	2	100	4	0	1	1	0	0	0	0	1	1.00	5:08
3rd Period	1	2	50.0	0	0	0.00	1	1	100	3	0	1	1	1	1	1	0	0	1.50	8:13
4th Period	1	1	100	0	0	0.00	3	4	75.0	5	0	0	0	1	0	1	0	1	1.67	10:00
Game	4	6	66.7	0	2	0.00	6	7	85.7	14	0	2	2	4	1	2	0	2	1.27	27:34

By Time	FG	FGA	FG%	3Pt	3PA	3P%	FT	FTA	FT%	PTS	ORB	DRB	TR	PF	AST	TO	BS	ST	DA
Per Minute	0.15	0.22	66.7	0	0.07	0.00	0.22	0.25	85.7	0.51	0	0.07	0.07	0.15	0.04	0.07	0	0.07	0
Normal Game	5.80	8.71	66.7	0	2.90	0.00	8.71	10.2	85.7	20.3	0	2.90	2.90	5.80	1.45	2.90	0	2.90	0

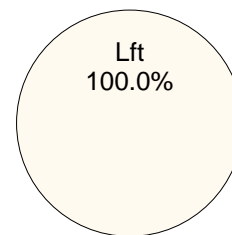


Shot Summary	All Shots		
	M/A	%	PTS
3Pt FG	0/0	0.0%	0
2Pt FG	1/3	33.3%	2
Layups - L	1/1	100.0%	2
Layups - R	0/0	0.0%	0
Dunks	0/0	0.0%	0
Putbacks	0/0	0.0%	0
Overall Shooting	1/3	33.3%	2
Free Throws	0/0	0.0%	0
Paint Points			2
Pts off Steals			0
2nd Chance Pts			2
Total Points			2
Scoring Efficiency			
Points/Shot	0.67		
2pt Points/Shot	0.67		
3pt Points/Shot	0.00		
FT Points/Shot	0.00		
2pt/3pt Eff			

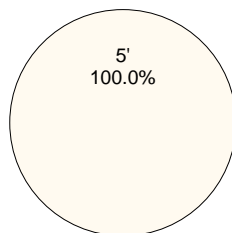
Scoring Distribution



Made Shots
Scoring Locations

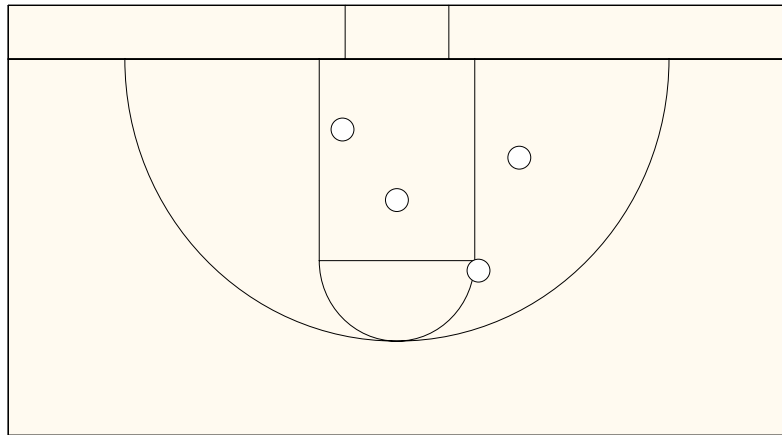
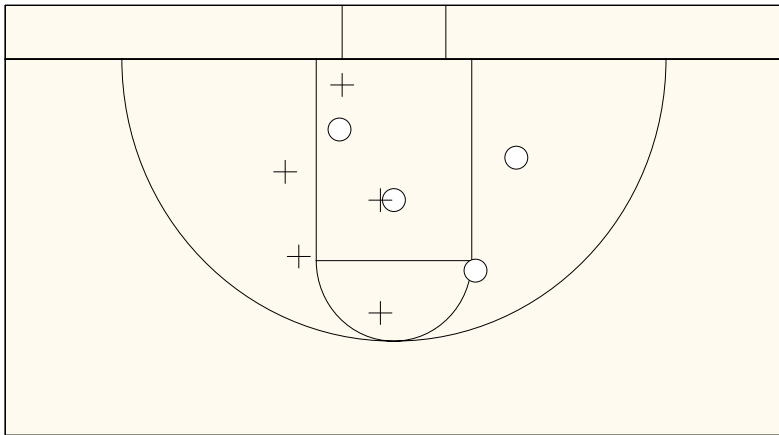


Scoring Range



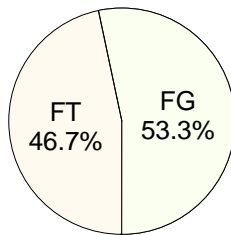
By Period	FG	FGA	FG%	3Pt	3PA	3P%	FT	FTA	FT%	PTS	ORB	DRB	TR	PF	AST	TO	BS	ST	P/S	MIN
1st Period	0	0	0.00	0	0	0.00	0	0	0.00	0	0	0	0	0	0	0	0	0	0.00	DNP
2nd Period	0	2	0.00	0	0	0.00	0	0	0.00	0	0	0	0	0	0	0	0	0	0.00	3:42
3rd Period	0	0	0.00	0	0	0.00	0	0	0.00	0	0	0	0	1	0	0	0	0	0.00	2:02
4th Period	1	1	100	0	0	0.00	0	0	0.00	2	1	0	1	2	0	1	0	0	2.00	10:00
Game	1	3	33.3	0	0	0.00	0	0	0.00	2	1	0	1	3	0	1	0	0	0.67	15:44

By Time	FG	FGA	FG%	3Pt	3PA	3P%	FT	FTA	FT%	PTS	ORB	DRB	TR	PF	AST	TO	BS	ST	DA
Per Minute	0.06	0.19	33.3	0	0	0.00	0	0	0.00	0.13	0.06	0	0.06	0.19	0	0.06	0	0	0
Normal Game	2.54	7.63	33.3	0	0	0.00	0	0	0.00	5.08	2.54	0	2.54	7.63	0	2.54	0	0	0

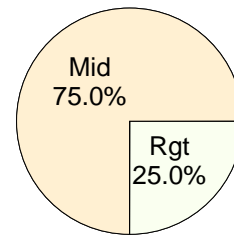


Shot Summary	M/A	%	PTS
3Pt FG	0/0	0.0%	0
2Pt FG	4/9	44.4%	8
Layups - L	0/0	0.0%	0
Layups - R	0/0	0.0%	0
Dunks	0/0	0.0%	0
Putbacks	0/1	0.0%	0
Overall Shooting	4/9	44.4%	8
Free Throws	7/9	77.8%	7
Paint Points			4
Pts off Steals			0
2nd Chance Pts			5
Total Points			15
Scoring Efficiency			
Points/Shot	1.15		
2pt Points/Shot	0.89		
3pt Points/Shot	0.00		
FT Points/Shot	0.78		
2pt/3pt Eff			

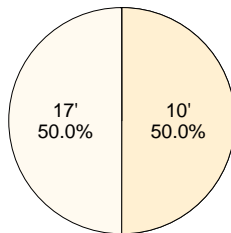
Scoring Distribution



Made Shots Scoring Locations

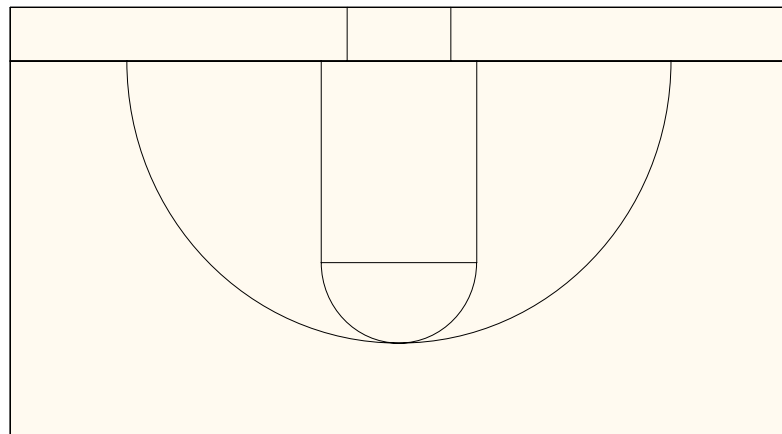
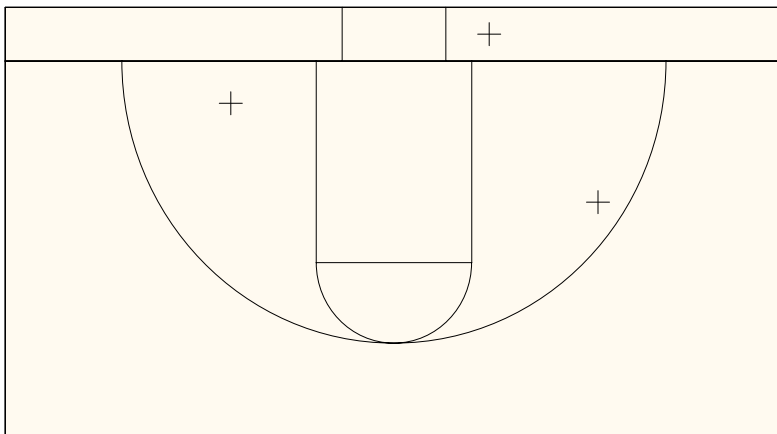


Scoring Range



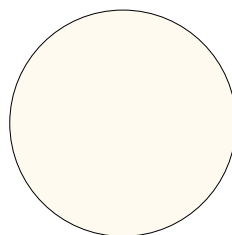
By Period	FG	FGA	FG%	3Pt	3PA	3P%	FT	FTA	FT%	PTS	ORB	DRB	TR	PF	AST	TO	BS	ST	P/S	MIN
1st Period	2	3	66.7	0	0	0.00	1	1	100	5	0	1	1	1	0	0	1	0	1.67	10:01
2nd Period	2	3	66.7	0	0	0.00	3	4	75.0	7	1	0	1	1	0	0	1	0	1.40	7:12
3rd Period	0	3	0.00	0	0	0.00	3	4	75.0	3	2	0	2	2	0	0	0	0	0.60	4:29
4th Period	0	0	0.00	0	0	0.00	0	0	0.00	0	0	0	0	0	0	0	0	0	0.00	DNP
Game	4	9	44.4	0	0	0.00	7	9	77.8	15	3	1	4	4	0	0	2	0	1.15	21:42

By Time	FG	FGA	FG%	3Pt	3PA	3P%	FT	FTA	FT%	PTS	ORB	DRB	TR	PF	AST	TO	BS	ST	DA
Per Minute	0.18	0.41	44.4	0	0	0.00	0.32	0.41	77.8	0.69	0.14	0.05	0.18	0.18	0	0	0.09	0	0
Normal Game	7.37	16.6	44.4	0	0	0.00	12.9	16.6	77.8	27.6	5.53	1.84	7.37	7.37	0	0	3.69	0	0

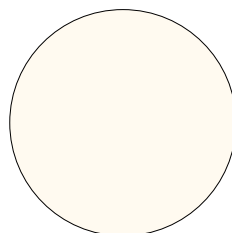


Shot Summary	All Shots		
	M/A	%	PTS
3Pt FG	0/0	0.0%	0
2Pt FG	0/3	0.0%	0
Layups - L	0/0	0.0%	0
Layups - R	0/1	0.0%	0
Dunks	0/0	0.0%	0
Putbacks	0/0	0.0%	0
Overall Shooting	0/3	0.0%	0
Free Throws	0/0	0.0%	0
Paint Points			0
Pts off Steals			0
2nd Chance Pts			0
Total Points			0
Scoring Efficiency			
Points/Shot	0.00		
2pt Points/Shot	0.00		
3pt Points/Shot	0.00		
FT Points/Shot	0.00		
2pt/3pt Eff			

Scoring Distribution

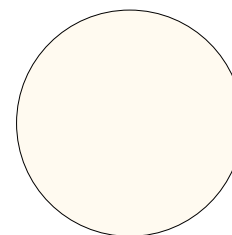


Scoring Range



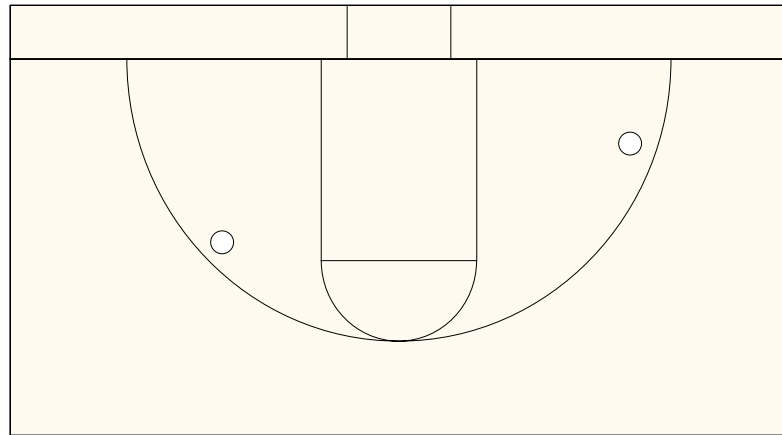
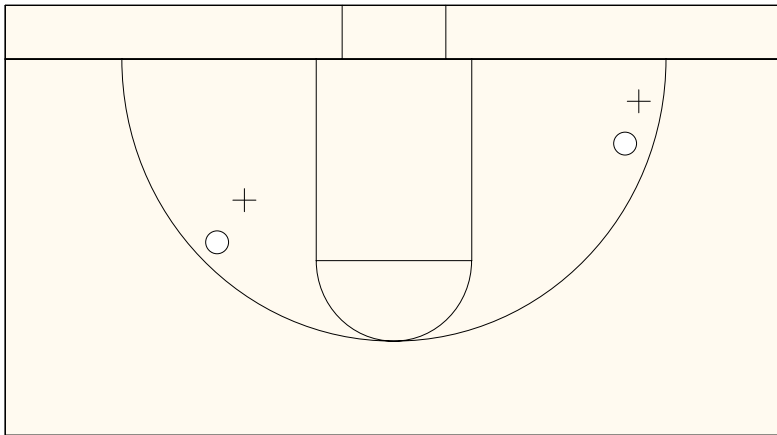
Made Shots

Scoring Locations



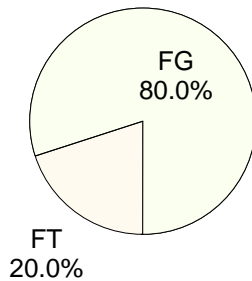
By Period	FG	FGA	FG%	3Pt	3PA	3P%	FT	FTA	FT%	PTS	ORB	DRB	TR	PF	AST	TO	BS	ST	P/S	MIN
1st Period	0	1	0.00	0	0	0.00	0	0	0.00	0	0	0	0	0	0	1	0	0	0.00	5:48
2nd Period	0	1	0.00	0	0	0.00	0	0	0.00	0	0	0	0	0	0	0	0	0	0.00	4:18
3rd Period	0	1	0.00	0	0	0.00	0	0	0.00	0	0	0	0	0	0	0	0	0	0.00	1:47
4th Period	0	0	0.00	0	0	0.00	0	0	0.00	0	0	0	0	0	0	0	0	0	0.00	DNP
Game	0	3	0.00	0	0	0.00	0	0	0.00	0	0	0	0	0	0	1	0	0	0.00	11:53

By Time	FG	FGA	FG%	3Pt	3PA	3P%	FT	FTA	FT%	PTS	ORB	DRB	TR	PF	AST	TO	BS	ST	DA
Per Minute	0	0.25	0.00	0	0	0.00	0	0	0.00	0	0	0	0	0	0	0.08	0	0	0
Normal Game	0	10.1	0.00	0	0	0.00	0	0	0.00	0	0	0	0	0	3.37	0	0	0	



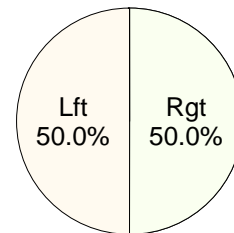
Shot Summary	All Shots		
	M/A	%	PTS
3Pt FG	0/0	0.0%	0
2Pt FG	2/4	50.0%	4
Layups - L	0/0	0.0%	0
Layups - R	0/0	0.0%	0
Dunks	0/0	0.0%	0
Putbacks	0/0	0.0%	0
Overall Shooting	2/4	50.0%	4
Free Throws	1/2	50.0%	1
Paint Points			0
Pts off Steals			0
2nd Chance Pts			0
Total Points			5
Scoring Efficiency			
Points/Shot	1.00		
2pt Points/Shot	1.00		
3pt Points/Shot	0.00		
FT Points/Shot	0.50		
2pt/3pt Eff			

Scoring Distribution

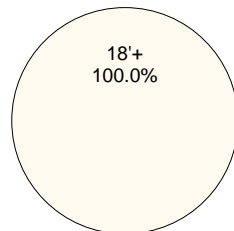


Made Shots

Scoring Locations

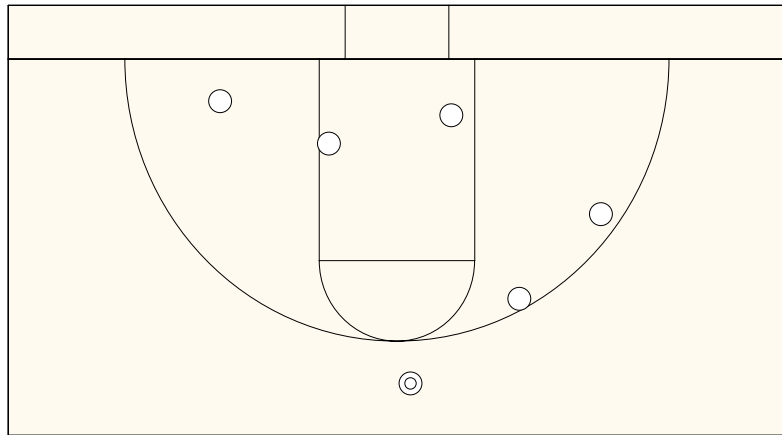
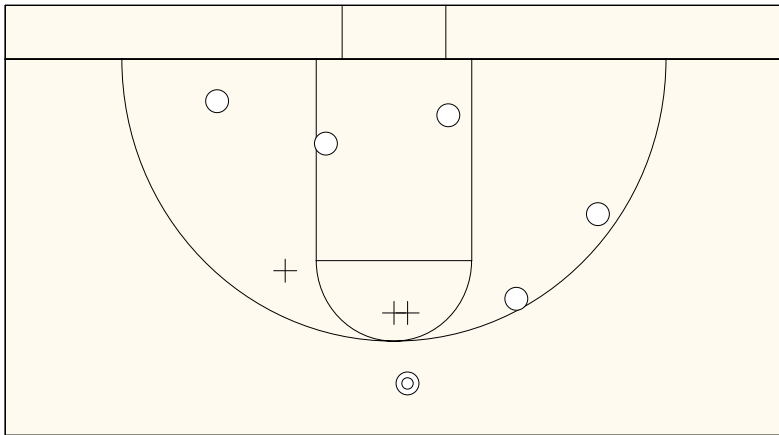


Scoring Range



By Period	FG	FGA	FG%	3Pt	3PA	3P%	FT	FTA	FT%	PTS	ORB	DRB	TR	PF	AST	TO	BS	ST	P/S	MIN
1st Period	0	0	0.00	0	0	0.00	0	0	0.00	0	0	0	0	0	0	0	0	0	0.00	DNP
2nd Period	0	1	0.00	0	0	0.00	0	0	0.00	0	1	0	1	0	0	1	0	0	0.00	3:40
3rd Period	0	0	0.00	0	0	0.00	0	0	0.00	0	0	0	0	0	0	0	0	0	0.00	DNP
4th Period	2	3	66.7	0	0	0.00	1	2	50.0	5	0	2	2	1	0	0	0	0	1.25	10:00
Game	2	4	50.0	0	0	0.00	1	2	50.0	5	1	2	3	1	0	1	0	0	1.00	13:40

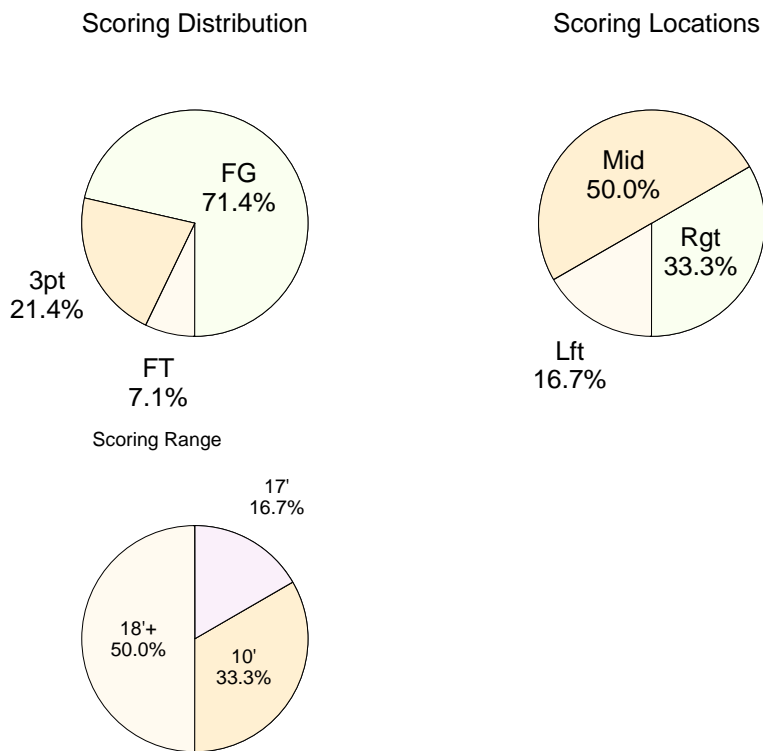
By Time	FG	FGA	FG%	3Pt	3PA	3P%	FT	FTA	FT%	PTS	ORB	DRB	TR	PF	AST	TO	BS	ST	DA
Per Minute	0.15	0.29	50.0	0	0	0.00	0.07	0.15	50.0	0.37	0.07	0.15	0.22	0.07	0	0.07	0	0	0
Normal Game	5.85	11.7	50.0	0	0	0.00	2.93	5.85	50.0	14.6	2.93	5.85	8.78	2.93	0	2.93	0	0	0



All Shots

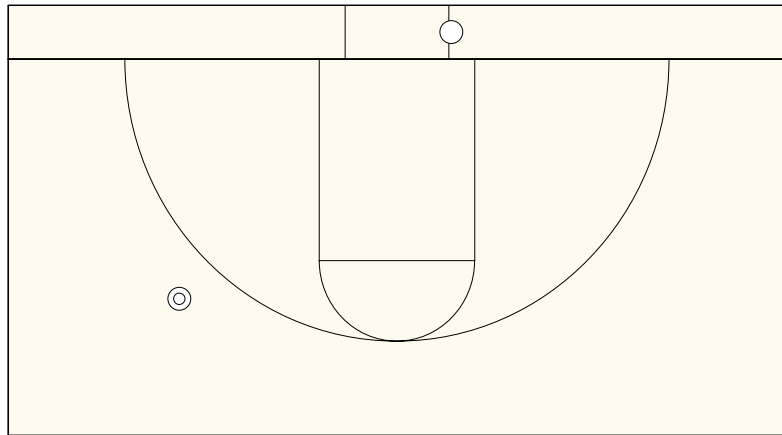
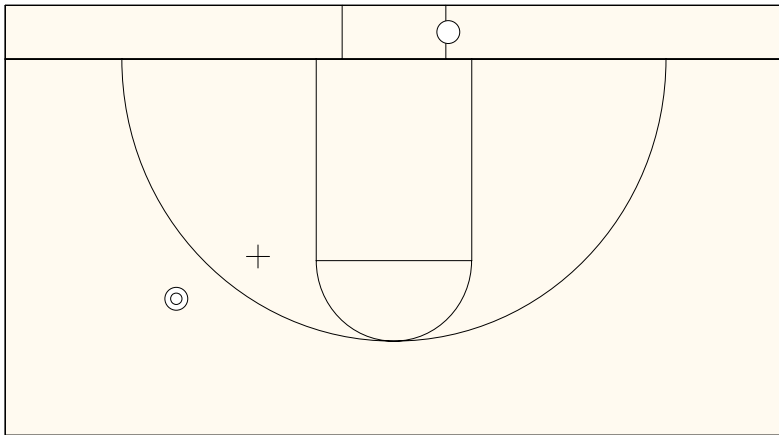
Shot Summary	M/A	%	PTS
3Pt FG	1/1	100.0%	3
2Pt FG	5/8	62.5%	10
Layups - L	0/0	0.0%	0
Layups - R	0/0	0.0%	0
Dunks	0/0	0.0%	0
Putbacks	0/0	0.0%	0
Overall Shooting	6/9	66.7%	13
Free Throws	1/1	100.0%	1
Paint Points			4
Pts off Steals			0
2nd Chance Pts			0
Total Points			14
Scoring Efficiency			
Points/Shot	1.56		
2pt Points/Shot	1.25		
3pt Points/Shot	3.00		
FT Points/Shot	1.00		
2pt/3pt Eff	+58.3		

Made Shots



By Period	FG	FGA	FG%	3Pt	3PA	3P%	FT	FTA	FT%	PTS	ORB	DRB	TR	PF	AST	TO	BS	ST	P/S	MIN
1st Period	3	3	100	1	1	100	0	0	0.00	9	0	2	2	0	1	0	0	0	2.25	10:01
2nd Period	1	2	50.0	0	0	0.00	0	0	0.00	2	0	1	1	0	0	0	0	0	1.00	6:52
3rd Period	1	3	33.3	0	0	0.00	1	1	100	3	0	1	1	1	0	0	0	0	1.00	9:59
4th Period	0	0	0.00	0	0	0.00	0	0	0.00	0	0	0	0	0	0	0	0	0	0.00	DNP
Game	5	8	62.5	1	1	100	1	1	100	14	0	4	4	1	1	0	0	0	1.56	26:52

By Time	FG	FGA	FG%	3Pt	3PA	3P%	FT	FTA	FT%	PTS	ORB	DRB	TR	PF	AST	TO	BS	ST	DA
Per Minute	0.19	0.30	62.5	0.04	0.04	100	0.04	0.04	100	0.52	0	0.15	0.15	0.04	0.04	0	0	0	0
Normal Game	7.44	11.9	62.5	1.49	1.49	100	1.49	1.49	100	20.8	0	5.96	5.96	1.49	1.49	0	0	0	0

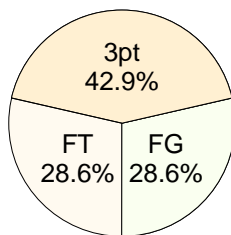


All Shots

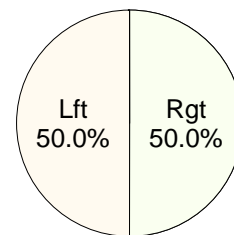
Shot Summary	M/A	%	PTS
3Pt FG	1/1	100.0%	3
2Pt FG	1/2	50.0%	2
Layups - L	0/0	0.0%	0
Layups - R	1/1	100.0%	2
Dunks	0/0	0.0%	0
Putbacks	0/0	0.0%	0
Overall Shooting	2/3	66.7%	5
Free Throws	2/2	100.0%	2
Paint Points			2
Pts off Steals			2
2nd Chance Pts			0
Total Points			7
Scoring Efficiency			
Points/Shot	1.75		
2pt Points/Shot	1.00		
3pt Points/Shot	3.00		
FT Points/Shot	1.00		
2pt/3pt Eff	+66.7		

Made Shots

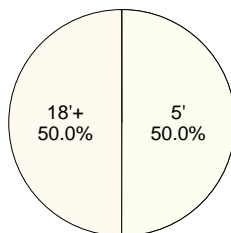
Scoring Distribution



Scoring Locations

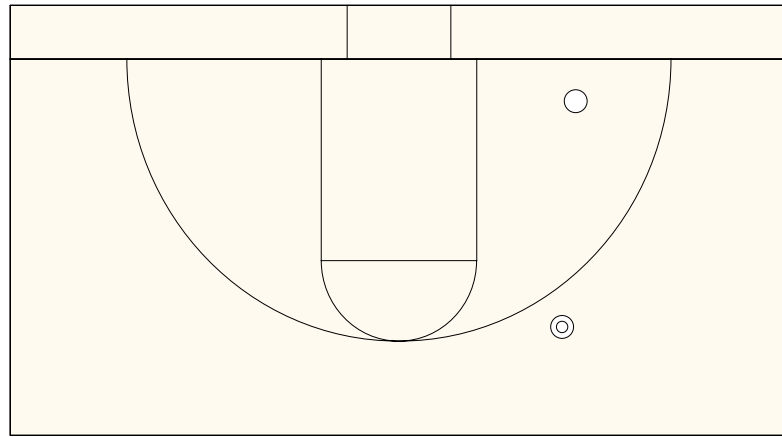
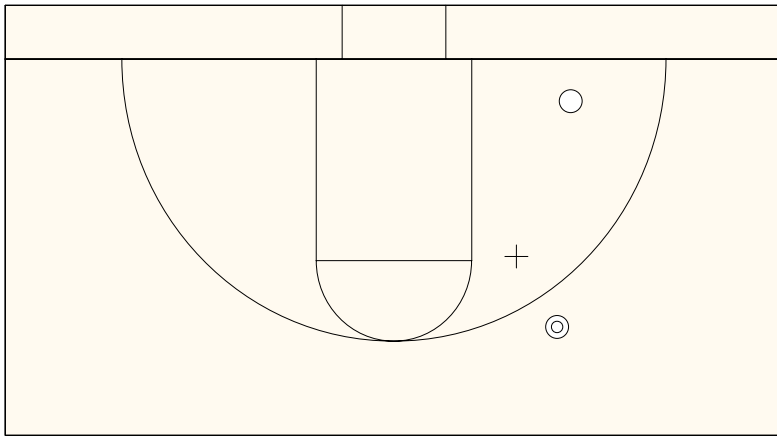


Scoring Range



By Period	FG	FGA	FG%	3Pt	3PA	3P%	FT	FTA	FT%	PTS	ORB	DRB	TR	PF	AST	TO	BS	ST	P/S	MIN
1st Period	1	1	100	1	1	100	0	0	0.00	5	0	0	0	0	0	0	0	1	2.50	5:48
2nd Period	0	0	0.00	0	0	0.00	2	2	100	2	0	2	2	0	2	0	0	0	2.00	8:21
3rd Period	0	1	0.00	0	0	0.00	0	0	0.00	0	0	0	0	0	0	2	0	0	0.00	7:56
4th Period	0	0	0.00	0	0	0.00	0	0	0.00	0	0	0	0	0	0	0	0	0	0.00	DNP
Game	1	2	50.0	1	1	100	2	2	100	7	0	2	2	0	2	2	0	1	1.75	22:05

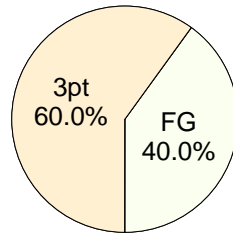
By Time	FG	FGA	FG%	3Pt	3PA	3P%	FT	FTA	FT%	PTS	ORB	DRB	TR	PF	AST	TO	BS	ST	DA
Per Minute	0.05	0.09	50.0	0.05	0.05	100	0.09	0.09	100	0.32	0	0.09	0.09	0	0.09	0.09	0	0.05	0
Normal Game	1.81	3.62	50.0	1.81	1.81	100	3.62	3.62	100	12.7	0	3.62	3.62	0	3.62	3.62	0	1.81	0



All Shots

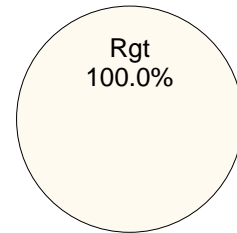
Shot Summary	M/A	%	PTS
3Pt FG	1/1	100.0%	3
2Pt FG	1/2	50.0%	2
Layups - L	0/0	0.0%	0
Layups - R	0/0	0.0%	0
Dunks	0/0	0.0%	0
Putbacks	0/0	0.0%	0
Overall Shooting	2/3	66.7%	5
Free Throws	0/0	0.0%	0
Paint Points			0
Pts off Steals			2
2nd Chance Pts			0
Total Points			5
Scoring Efficiency			
Points/Shot	1.67		
2pt Points/Shot	1.00		
3pt Points/Shot	3.00		
FT Points/Shot	0.00		
2pt/3pt Eff	+66.7		

Scoring Distribution

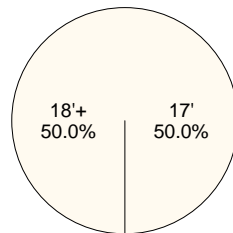


Made Shots

Scoring Locations



Scoring Range



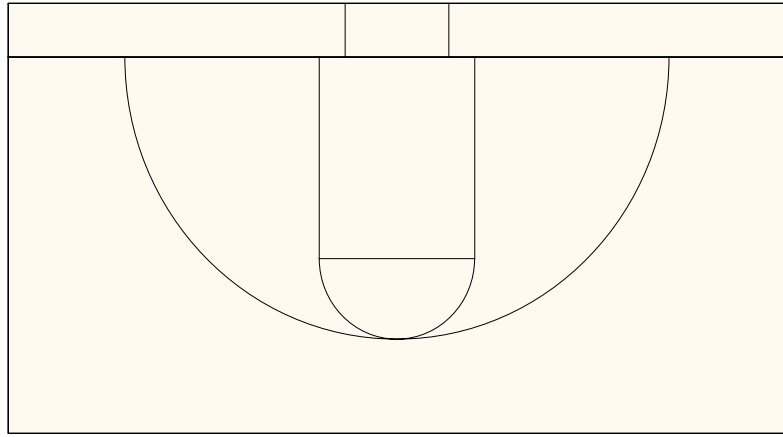
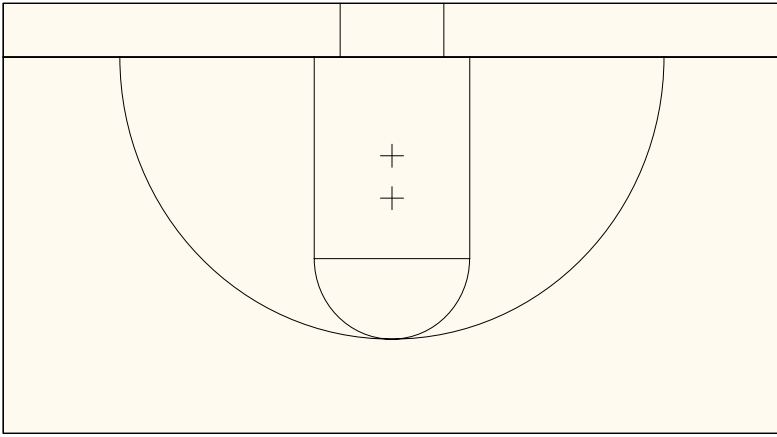
By Period	FG	FGA	FG%	3Pt	3PA	3P%	FT	FTA	FT%	PTS	ORB	DRB	TR	PF	AST	TO	BS	ST	P/S	MIN
1st Period	0	1	0.00	0	0	0.00	0	0	0.00	0	0	0	0	0	0	0	0	0	0.00	3:19
2nd Period	0	0	0.00	0	0	0.00	0	0	0.00	0	0	0	0	0	0	0	0	0	0.00	DNP
3rd Period	0	0	0.00	1	1	100	0	0	0.00	3	0	0	0	0	0	0	0	0	3.00	5:30
4th Period	1	1	100	0	0	0.00	0	0	0.00	2	0	1	1	1	0	1	0	1	2.00	3:34
Game	1	2	50.0	1	1	100	0	0	0.00	5	0	1	1	1	0	1	0	1	1.67	12:22

By Time	FG	FGA	FG%	3Pt	3PA	3P%	FT	FTA	FT%	PTS	ORB	DRB	TR	PF	AST	TO	BS	ST	DA
Per Minute	0.08	0.16	50.0	0.08	0.08	100	0	0	0.00	0.40	0	0.08	0.08	0.08	0	0.08	0	0.08	0
Normal Game	3.23	6.47	50.0	3.23	3.23	100	0	0	0.00	16.2	0	3.23	3.23	3.23	0	3.23	0	3.23	0

CybersportsUSA Basketball - INDIVIDUAL SHOT CHART for Vanessa Hayden

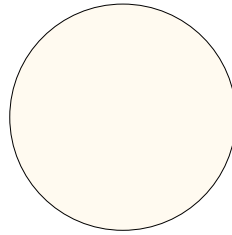
Seattle Storm vs. Minnesota Lynx

DATE: 07/05/2008 TIME: 7:00pm SITE: Seattle

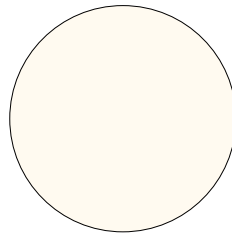


Shot Summary	All Shots		
	M/A	%	PTS
3Pt FG	0/0	0.0%	0
2Pt FG	0/2	0.0%	0
Layups - L	0/0	0.0%	0
Layups - R	0/0	0.0%	0
Dunks	0/0	0.0%	0
Putbacks	0/0	0.0%	0
Overall Shooting	0/2	0.0%	0
Free Throws	0/2	0.0%	0
Paint Points			0
Pts off Steals			0
2nd Chance Pts			0
Total Points			0
Scoring Efficiency			
Points/Shot	0.00		
2pt Points/Shot	0.00		
3pt Points/Shot	0.00		
FT Points/Shot	0.00		
2pt/3pt Eff			

Scoring Distribution

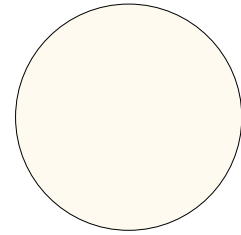


Scoring Range



Made Shots

Scoring Locations



By Period	FG	FGA	FG%	3Pt	3PA	3P%	FT	FTA	FT%	PTS	ORB	DRB	TR	PF	AST	TO	BS	ST	P/S	MIN
1st Period	0	0	0.00	0	0	0.00	0	0	0.00	0	0	0	0	0	0	0	0	0	0.00	DNP
2nd Period	0	0	0.00	0	0	0.00	0	0	0.00	0	0	0	0	0	0	0	0	0	0.00	DNP
3rd Period	0	0	0.00	0	0	0.00	0	2	0.00	0	0	0	2	0	1	0	0	0	0.00	1:39
4th Period	0	2	0.00	0	0	0.00	0	0	0.00	0	0	1	1	2	0	0	0	1	0.00	6:26
Game	0	2	0.00	0	0	0.00	0	2	0.00	0	0	1	1	4	0	1	0	1	0.00	8:05

By Time	FG	FGA	FG%	3Pt	3PA	3P%	FT	FTA	FT%	PTS	ORB	DRB	TR	PF	AST	TO	BS	ST	DA
Per Minute	0	0.25	0.00	0	0	0.00	0	0.25	0.00	0	0	0.12	0.12	0.49	0	0.12	0	0.12	0
Normal Game	0	9.90	0.00	0	0	0.00	0	9.90	0.00	0	0	4.95	4.95	19.8	0	4.95	0	4.95	0