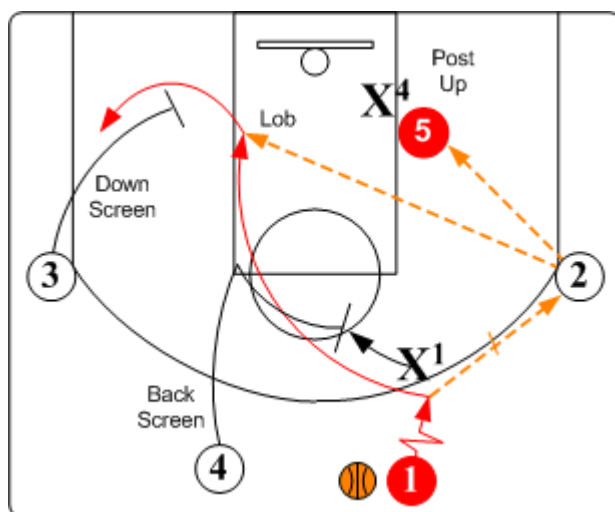


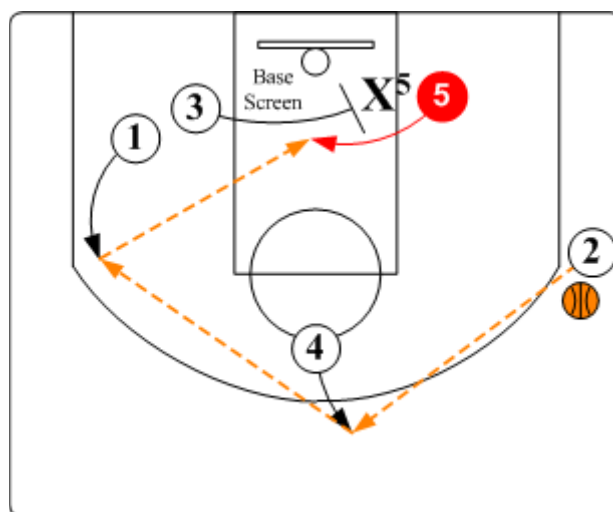
Early Post Base Cross

Post with weakside base cross action gives initial early push attack a sustained flow into half court offense without stopping preventing the defense with an opportunity to get set. Post Base Cross allows for strong post ups, back screen, down screen, and base cross screen options.

Primary "Go To" Player: #5 Post
Secondary "Go To" Player: #1 Point

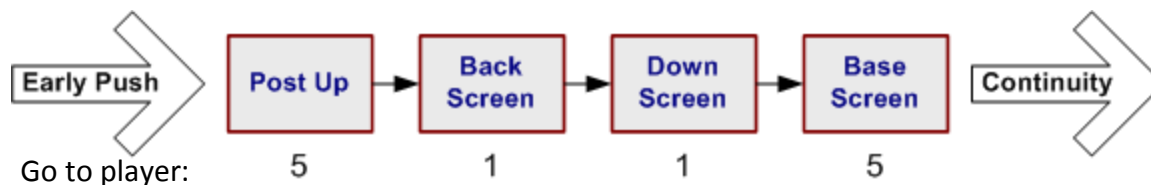


Post Up. O1 makes an entry pass to O2 and cuts over O4's back screen for possible return lob pass. O5 posts up hard wanting the ball from O2. O3 screens down for O1.



Base Cross Screen. Ball is reversed to opposite wing. O1 looks to feed O5 coming off O3's base screen.

Schematic Sequence:



Continuity:

When the early Base Cross set does not create a good shot or an advantage, in order to avoid any rush or panic shots as the shot clock winds down, it is important to move directly into a final phase or continuity offense.