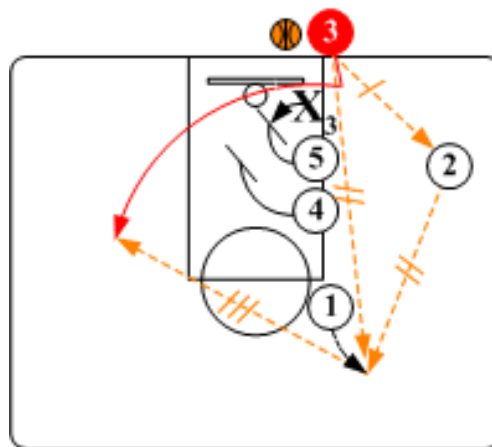
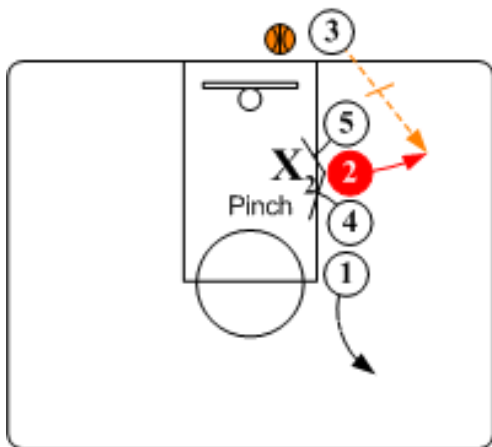


Stack Alignment - "Pinch Double"

Primary "Go To" Player: #2 Shooter
Secondary "Go To" Player: #3 Inbounder

When the defense plays to the inside or zones, the baseline double is an effective play to get a shooter open for a high percentage shot.

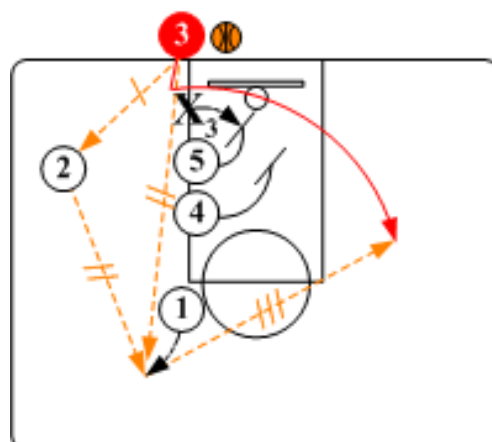
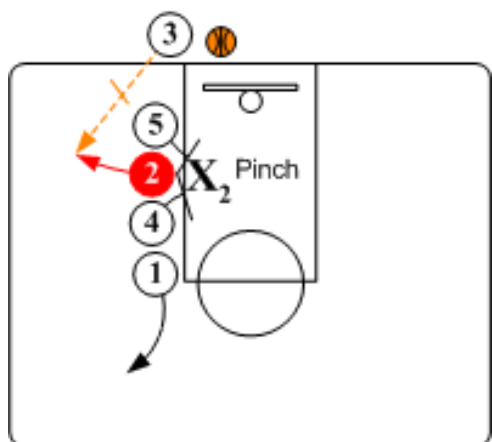
Right Side Entry



Double Screen On inbounder O2's signal, O4 and O5 step in and set a double screen of defender X2. Shooter O2 pops out to short corner for high percentage shot. Point O1 releases back for safety value pass.

Base Tandem Option: If shooter does not take the shot or if the ball is inbounded directly to O1, O3 cuts off of O5's, and O4's down screens. O1 looks to feed O3 or initiate a predetermined continuity.

Left Side Entry



Double Screen On inbounder O2's signal, O4 and O5 step in and set a double screen of defender X2. Shooter O2 pops out to short corner for high percentage shot. Point O1 releases back for safety value pass.

Base Tandem Option: If shooter does not take the shot or if the ball is inbounded directly to O1, O3 cuts off of O5's and O4's down screens. O1 looks to feed O3 or initiate a predetermined continuity.