

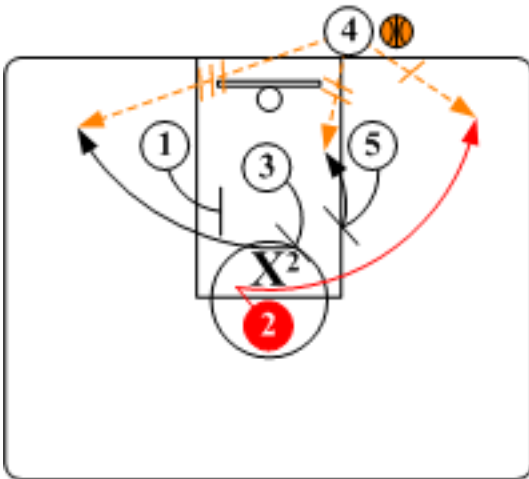
Triangle Alignment - "Back Screen"

Primary "Go To" Player: #2 Shooter

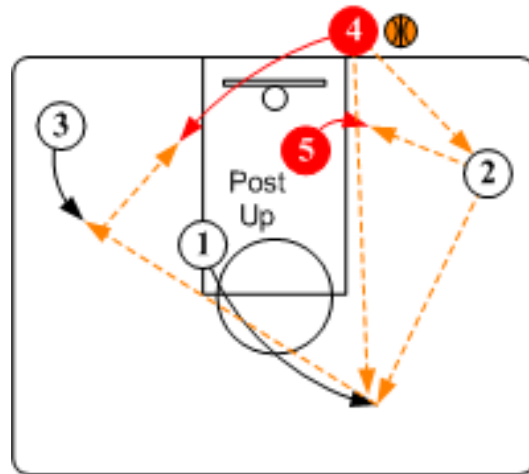
Secondary "Go To" Player: #5 Post or #4 Inbounder

This play is designed to free up shooters along the baseline along with having screen/roll options if the defense switches.

Right Side Entry

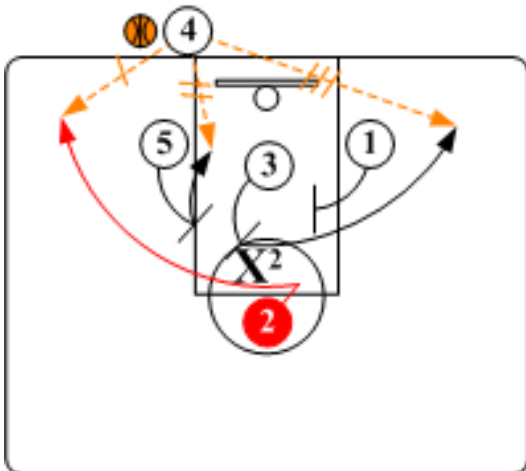


Flair. O3 and O5 step up and set tandem back screens for shooter O2. O2 cuts baseline for shot as O1 screens for O3. Inbounder O4 looks to pass shooters O2 or O3 or feed O5 rolling to basket off screen.

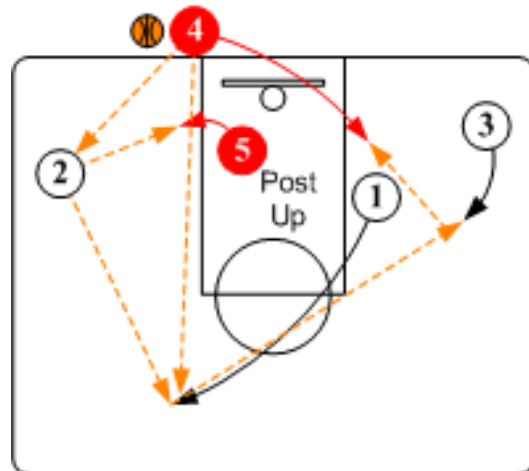


Post Up Options: When the ball is passed to either wing or passed directly out to O1, O4 steps inbounds on the weakside and posts up. When O1 receives the ball continuity action is initiated.

Left Side Entry



Flair O3 and O5 step up and set tandem back screens for shooter O2. O2 cuts baseline for shot as O1 screens for O3. Inbounder O4 looks to pass shooters O2 or O3 or feed O5 rolling to basket off screen.



Post Up Options: When the ball is passed to either wing or passed directly out to O1, O4 steps inbounds on the weakside and posts up. When O1 receives the ball continuity action is initiated.