

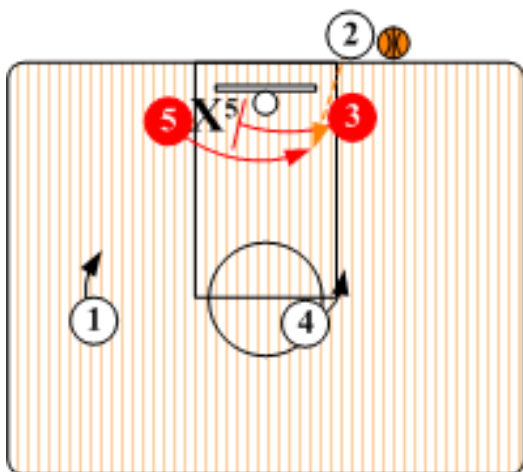
Triangle Alignment - "Base Cross"

Primary "Go To" Player: #5 Post

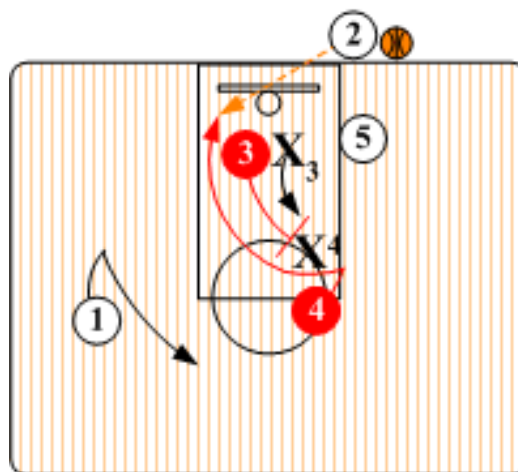
Secondary "Go To" Player: #4 Power Forward

Base Cross utilizes a base screen and back screen winding up in a single/double screen option for the inbound passer. These quick hitting options make it very difficult to defend. It is effective against both a man to man and zone defense.

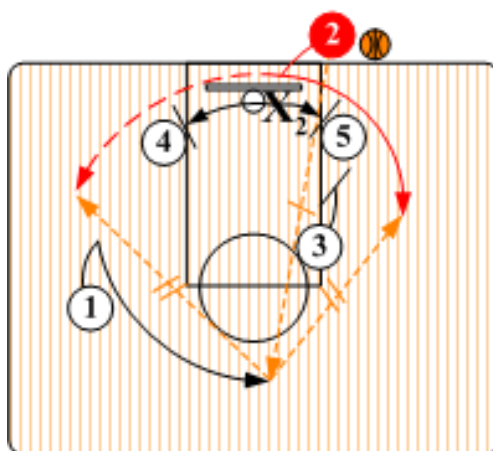
Right Side Entry



Base Cross Screen: O3 sets a base cross screen for O5. O5 goes over O3's screen for shot. Inbounder passer O2 looks to make a lob pass to O5 or, if the defense switches, feeds O5 posting up against the smaller defender.

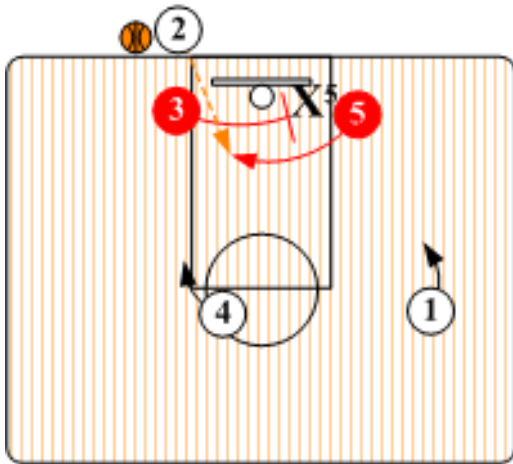


Back Screen Option: After setting a back screen for O5, O3 steps up and sets a back screen for O4. Inbounder passer looks to feed O4 cutting to the basket off O3's screen.

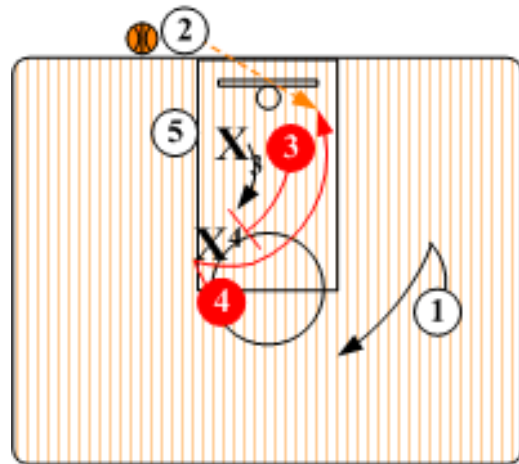


Single/Double Screen: If/when the O5's or O4's options are not available, O2 makes a release pass out to O1 as O5 and O3 set a staggered double screen and O4 sets up for a base screen. Inbounder O2 steps inbound under the basket and has option of curling off O3's and O5's staggered double screen or O4's single screen.

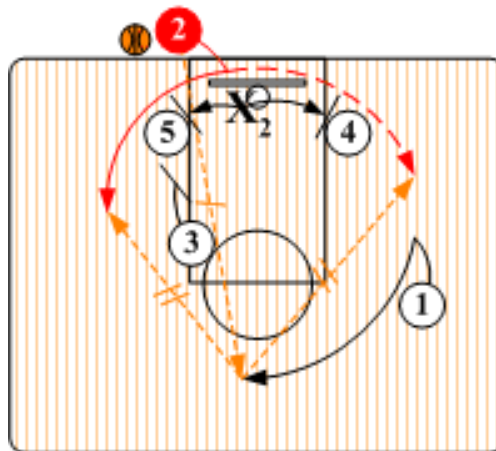
Left Side Entry



Base Cross Screen: O3 sets a base cross screen for O5. O5 goes over O3's screen for shot. Inbounder passer O2 looks to make a lob pass to O5 or, if the defense switches, feeds O5 posting up against the smaller defender.



Back Screen Option: After setting a back screen for O5, O3 steps up and sets a back screen for O4. Inbounds passer looks to feed O4 cutting to the basket off O3's screen.



Single/Double Screen: If/when the O5's or O4's options are not available, O2 makes a release pass out to O1 as O5 and O3 set a staggered double screen and O4 sets up for a base screen. Inbounder O2 steps inbounds under the basket and has option of curling off O3's and O5's staggered double screen or O4's single screen.