

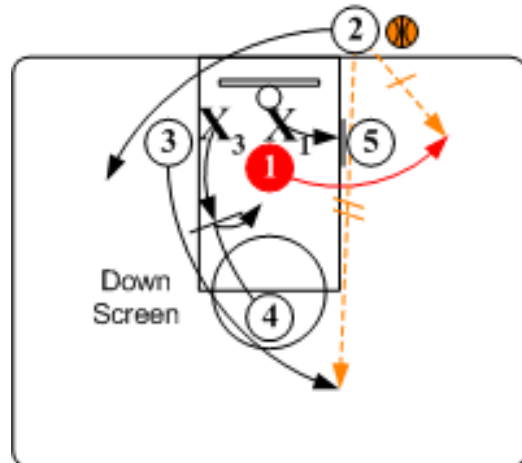
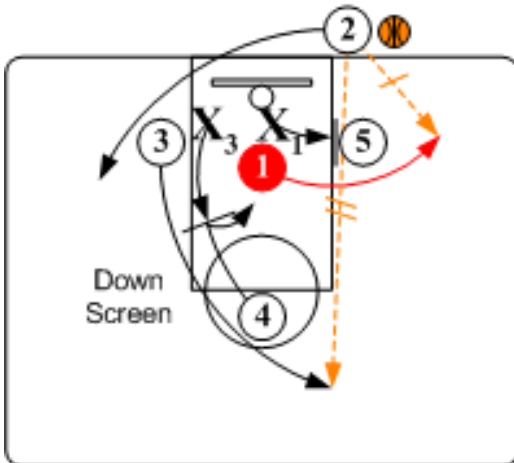
## Triangle Alignment - "Base Pinch"

Primary "Go To" Player: #1 Point

Secondary "Go To" Player: #3 Small Forward

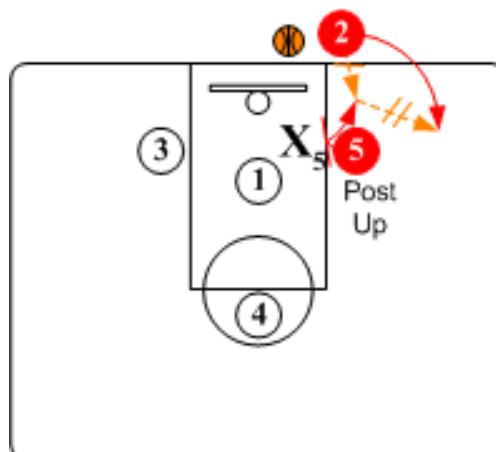
Base Pinch has been a stalwart in the NBA. The flexibility of being able to quickly attack either side of the defense has made Base Pinch a stalwart baseline out of bounds play in the NBA.

### Right Side Entry - Go Same



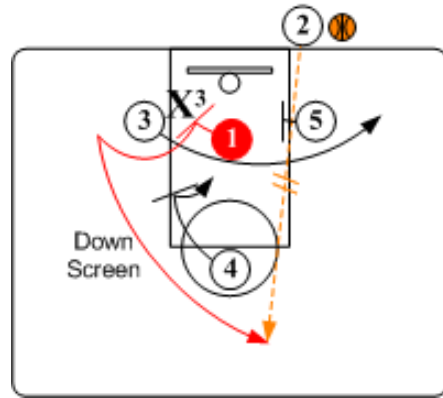
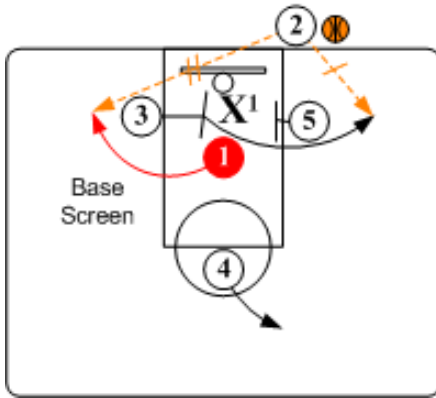
**Go Same Option** O3 and O5 set base screens for O1. O1 goes over O5's screen for shot. O5 rolls to basket as O4 sets a down screen for O3. Inbounder passer O2 looks to pass to O1 for shot or feed O5 or O4 rolling to basket off screens. When O2 passes directly out to O3, predetermined continuity action is initiated.

**Back Screen Option:** On the weakside, O3 can set a back screen for O4.



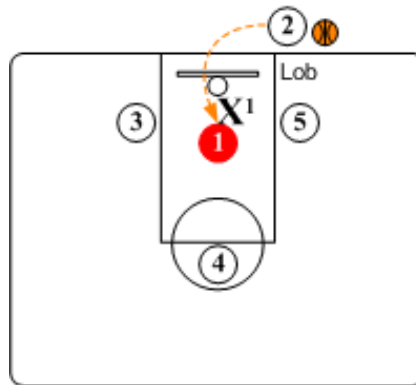
**Automatic:** If/when the defense plays to the inside and leaves the inbounder unguarded or zones, O3 has option of making a quick pass to O5 and then stepping inbounds for a return pass from O5.

## Right Entry - Go Opposite



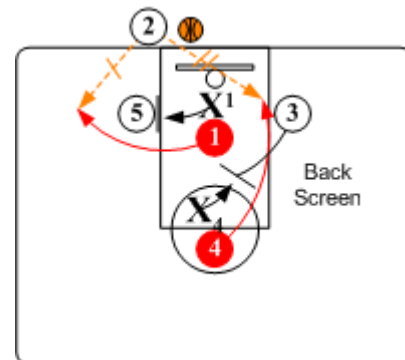
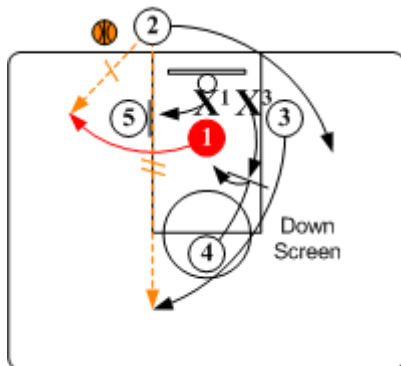
**Go Opposite** When O1 goes opposite off O3's base screen, O3 after setting the screen continues off O5's screen. Inbounder O2 looks to feed O1 or O3 or O5 rolling to basket off screen.

**Continuity:** If a high percentage shot is unavailable, O4 sets a down screen for O1. When O2 passes directly to O1 predetermined continuity action begins. NOTE: O1 also has option of setting a back screen for O4.



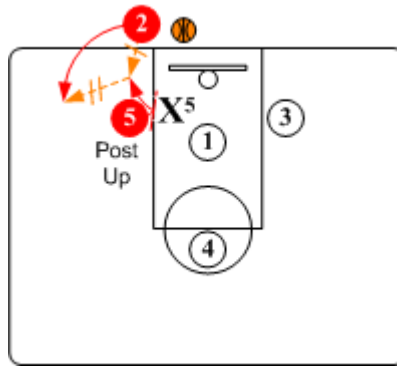
**Automatic:** On the initial alignment, if defender X1 assumes a facing position against O1 with back to inbounder O2, O2 looks to make a lob pass entry to O1.

## Left Go Same Side Entry



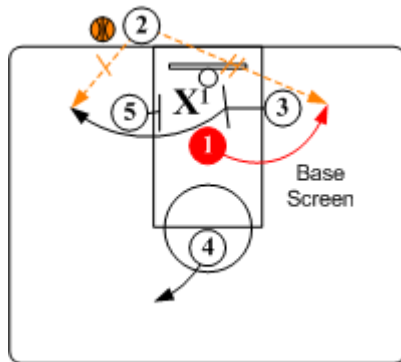
**Go Same Option** O3 and O5 set base screens for O1. O1 goes over O5's screen for shot. O5 rolls to basket as O4 sets a down screen for O3. Inbounder passer O2 looks to pass to O1 for shot or feed O5 or O4 rolling to basket off screens. When O2 passes directly out to O3, predetermined continuity action is initiated.

**Back Screen Option:** On the weakside, O3 can set a back screen for O4.

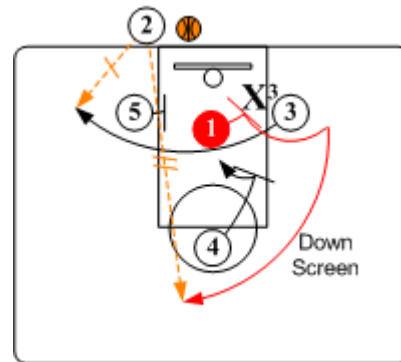


**Automatic:** If/when the defense plays to the inside and leaves the inbounder unguarded or zones, O3 has option of making a quick pass to O5 and then stepping inbounders for a return pass from O5.

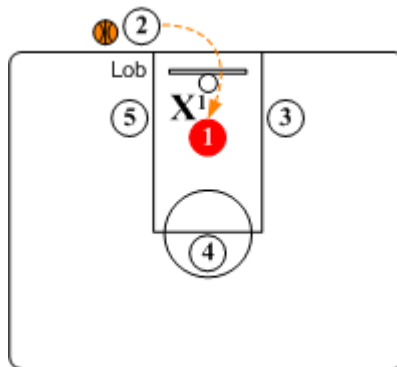
### Left Go Opposite Entry



**Go Opposite** When O1 goes opposite off O3's base screen, O3 after setting the screen continues off O5's screen. Inbounder O2 looks to feed O1 or O3 or O5 rolling to basket off screen.



**Continuity:** If a high percentage shot is unavailable, O4 sets a down screen for O1. When O2 passes directly to O1 predetermined continuity action begins. NOTE: O1 also has option of setting a backscreen for O4.



**Automatic:** On the initial alignment, if defender X1 assumes a facing position against O1 with back to inbounders passer O2, O2 looks to make a lob pass entry to O1.